

Inside this issue:

Campus Compact Membership Survey	1
2014 MLK Day of Service Collegiate Challenge	7
Newman Civic Fellows	8
2013 Voter Registration Contest	14
OkCC 2014 Civic/Community Engagement Workshop	17
Professional Development	18
2014 Heartland Regional Campus Compact Conference	18

## Campus Compact Membership Survey

This winter Oklahoma Campus Compact (OkCC) collaborated with the Writing Center at the University of Oklahoma to conduct an online membership survey for student and faculty involvement in service and service-learning, collect data on community partnerships, and assess satisfaction with the Oklahoma and national Campus Compact programs and services. Most OkCC members have participated in the national Campus Compact annual Membership Survey of Service Statistics (see 2012 survey at: <http://www.okhighered.org/okcampuscompact/>). Campus Compact suspended the Survey in 2013 to redesign it. To avoid the loss of one year's data the OkCC members

asked OkCC to administer the survey at the state level this year. Many thanks are due to Dr. Michele Eodice, Associate Provost for Academic Engagement and Director of the Writing Center, and to Ms. Donna Bengé, Office Manager of the Writing Center, constructing the survey and compiling the results.

The complete results of the 2013 Service Statistics for Oklahoma are available on the OkCC website at: <http://www.okhighered.org/okcampuscompact/>.

Dr. Debbie Blanke, Executive Director  
[dblank@osrhe.edu](mailto:dblank@osrhe.edu)  
 405-225-9145

Ms. Debbie Terlip, Associate Director  
[dterlip@osrhe.edu](mailto:dterlip@osrhe.edu)  
 405-225-9128

CONTACT:



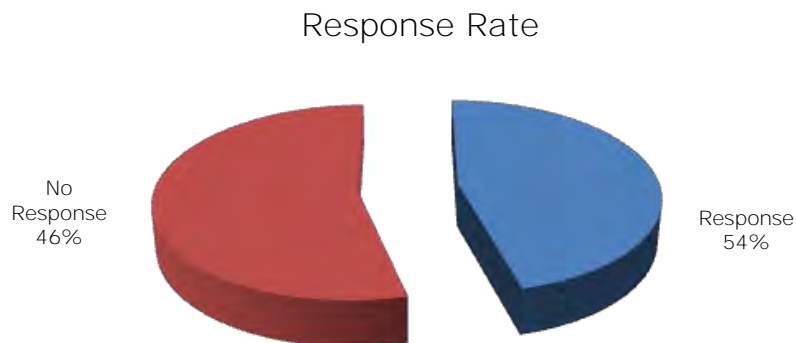
## Campus Compact Membership Survey

### 2013 Membership Survey Highlights

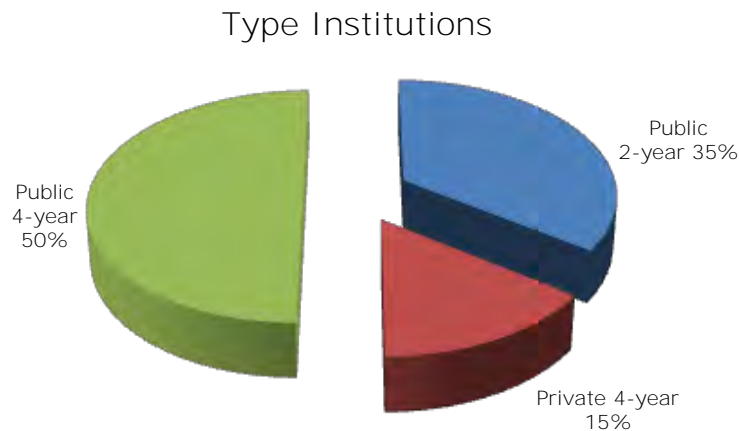
A list of the institutions responding to the survey is attached to the survey on the website. While the Oklahoma response rate for the past 5 years' survey conducted by Campus Compact averaged 86%, the response rate for this year was much lower at 54%. A review of the respondent list shows that while all of the large institutions responded in all tiers (2-year, 4-year, and compre-

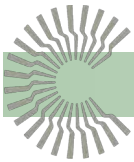
hensive institutions), many of the smaller institutions in the 2-year and 4-year tiers did not participate this year. This fact must be kept in mind when viewing state averages for various data, such as the average number of service-learning courses per campus.

### Response Rate



### Institutions Characteristics





## Campus Compact Membership Survey

### Institutions Characteristics

---

<b>Institution Size</b>	
Average Undergraduate FTE	6,486
Average Graduate FTE	579
Average Total FTE	7,065
Average Faculty FTE	314

---

### Community Service/Service-Learning/Civic Engagement

---

<b>Student Service</b>	
Average Students per Campus	1,239
% of Student FTE	18%
Average Student Hours per Week	3.08
Total Student Hours Served in 2012-2013	13,765,684
Value of Student Service	\$251,636,710

---

---

<b>Service Learning Courses</b>	
Average Service-Learning Courses per Campus	41
Average Faculty who Taught a Service-Learning Course	8%

---



## Campus Compact Membership Survey

### Institutions Characteristics

Most Common Issue Areas Addressed through Service	% Campuses
K-12 Education	95%
Economic Development Hunger Reading/Writing Senior/Elder Services Tutoring	90%
Access/Success in Higher Education Environment/Sustainability Mentoring Voting	85%
Animal Welfare Civil Rights/Human Rights Global Citizenship Health Care Multiculturalism/Diversity Poverty Women's Issues	80%
Agriculture/Nutrition Disability Issues Housing/Homelessness Parenting/Child	75%
Disaster Preparedness	70%
Mental Health Public Arts/Theater Sexual Assault Substance Abuse Tax Form Preparation Technology	65%



## Campus Compact Membership Survey

### Institutions Characteristics

Top Ways in which Institutions Support Faculty and Staff in Participating in Community Engagement Activities

- On site service opportunities (e.g., blood drives, food drives)
- Opportunities to serve with students on service projects
- Opportunities to serve with students as advisors to extracurricular service groups
- Encouragement to serve on community boards

Methods used by 50% or More Institutions to Foster or Support Student Community Service/Volunteering/Civic Engagement Activities and/or Service-Learning

- Considers service in awarding scholarships
- Gives extra credit for community service/civic engagement participation
- Hosts and/or funds public dialogs on current issues
- Provides space for student political organizations on campus
- Designates a period of time (e.g., day of service, service week) to highlight student civic engagement or service activities
- Manages liability associated with service placements
- Provides/coordinates transportation to and from community sites
- Requires academic service-learning as part of core curriculum in at least one major
- Gives awards to students for service
- Provides funding (e.g., scholarships, grants, awards) for student community service/volunteering/civic engagement and/or academic service -learning efforts

Methods used by Less than 50% Institutions to Foster or Support Student Community Service/Volunteering/Civic Engagement Activities and/or Service-Learning

- Defines and identifies academic service-learning courses
- Offers courses on volunteerism
- Offers courses on activism/advocacy
- Considers service formally in admissions process
- Records service on student transcripts
- Requires service for graduation
- Designates academic service-learning courses in the course guide
- Offers mini-grants to students for service-related initiatives
- Offers service/civic engagement major and/or minor



# Campus Compact Membership Survey

## Institutions Characteristics

### Partnerships

- Institutions average 75 mutually beneficial community partnerships.
- Most Common Partners
  - ⇒ K-12 Schools
  - ⇒ Nonprofit/community-based organizations

### Tracking and Assessment

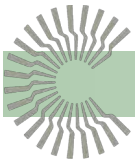
- 85% of institutions or units within the institution have mechanisms to record engagement (service activity) in the community.
- 65% of institutions or units within the institution have mechanisms for systematic assessment of community perceptions of the institution's engagement with community.

### Impact

- 55% of institutions or units within the institution have mechanisms for systematic assessment of community impact.
- 60% of institutions or units within the institution have mechanisms for systematic assessment of the impact of community engagement

### Resources

- 75% of institutions have the necessary resources available to complete all questions in this survey on behalf of the institution.



## 2014 MLK Day of Service Collegiate Challenge

Four OkCC member institutions participated in the 2014 Martin Luther King, Jr. Day of Service Collegiate Challenge on January 20th. The MLK Day of Service honors the life of Dr. King and is also a way of reminding all Americans of their civic duty to serve, as well as helping members of the community to work together to solve common problems. In 2013, colleges and universities across the United States engaged over 15,000 volunteers in over 500 unique student-led projects in a community-wide collaborative day of service honoring Dr. King. In 2014, Campus Compact plans to mobilize over 15,000 student and community volunteers to answer, in the words of Dr. King: "Life's most persistent and urgent question is 'What are you doing for others?'"



**Cameron University, East Central University, Northeastern State University, and Rogers State University answered the challenge.** Cameron University has participated in this Corporation for National and Community Service grant since its inception with Campus Compact. Each of these institutions received a grant of \$1,000 or more which required a 70% match (may be in-kind services). The MLK Day of Service Collegiate Challenge results will be available at: <http://www.okhighered.org/okcampuscompact/programs-grants.shtml>. In all, more than 70 Campus Compact member institutions nationwide are grantees in 2014.



**NORTHEASTERN STATE UNIVERSITY**





## Newman Civic Fellows

Please join us in congratulating the 2104 class of Campus Compact Newman Civic Fellows. These 15 students were nominated by their college or university president as inspiring student leaders who have demonstrated an investment in finding solutions for challenges facing

communities throughout the country. New to the award this year is a \$500 scholarship. These students were honored by OkCC and the Oklahoma State Regents for Higher Education at the April 24<sup>th</sup> State Regents meeting in Oklahoma City.

### Ms. Alfa Abame, Southwestern Oklahoma State University



Alfa Abame, born in Ethiopia, grew up in Stillwater, Oklahoma. A sophomore biology major planning to be a pediatric endocrinologist, she is an OK-LSAMP scholar, conducting research on the seeds of a plant found in Weatherford. Through her high school's National Honor Society and Beta Club, she worked with the County Youth Shelter, organizing clothes and food drives, as well as repair and painting. Alfa volunteered for Special Olympics, Habitat for Humanity, Stillwater Public Library, and the Stillwater Humane Society; she served as a peer advocate-tutor at her high school. Her church youth group adopted nursing home residents, visiting them, becoming their pen pals, and serving as their choir. A member of SWOSU's Presidential Leadership Class, Alfa has worked with Backpacks for Burcham Elementary student and heads the Black Students' Association's tutoring once a week at Eastside Academy in Clinton, pre-K through twelfth grade. She is a student member of the Panorama Series Committee, a member of SGA, Medical Professions and Biology Clubs, in addition to being an RA in Oklahoma Hall. Alfa has a real heart for the disadvantaged children of her native country and sees herself ultimately becoming a part of a mission such as Doctors Without Borders.



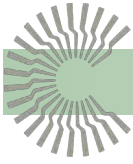
### Ms. Stephanie Anderson, Connors State College



Stephanie Anderson is patriot, parent and excellent example for the students of Connors State College. A talented over-achiever, she is remarkably organized and known among her peers for her generous heart of service. She has achieved a great many national and local honors, but her most meaningful contribution is the charismatic way she inspires those around her to try harder, be more and achieve their dreams. Her tireless work for veterans on our campus has inspired students and faculty alike to be more involved and help those less fortunate. If her aspiration is to leave every situation better than she found it, she has achieved this goal 100 fold while a student at Connors State College. A future nurse, she will be a success in her profession as well as valued contributor to her community.







## Newman Civic Fellows

### Mr. Cedric Bond, Oklahoma City University



Cedric Bond's passions include natural resources and people with disabilities. He volunteers his time in both areas while completing his history major and working at the Intergenerational Computer Center. He has always been fascinated by law and government, from serving as a page in the Washington State Capitol at fourteen to serving as a volunteer water quality monitor for the Oklahoma Conservation Commission now. As an internationally ranked kayaker, Cedric has traveled to other countries and learned from people with diverse backgrounds. His everyday actions demonstrate his sincere desire to make a positive difference, including his activism through social media. In addition to other academic, work, and volunteer activities, he regularly shares his love of his sport at a local hospital for children with special needs. When addressing social issues, Cedric's approach is to learn as much as possible, then use that knowledge to act. He has a track record of civic involvement that points to a future of public problem solving as he plans to attend law school to focus on natural resource legal issues. He represents Oklahoma City University and Campus Compact superbly.



### Ms. Shannon Fish, Northern Oklahoma College



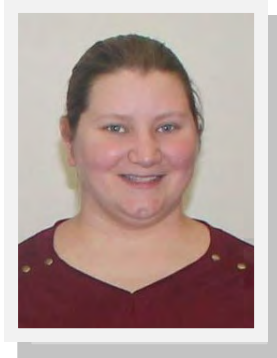
Shannon Fish currently serves as President of the College Democrats, and as a member of the Literature Club and Phi Theta Kappa. Shannon recently arranged a raffle, sponsored by the Literature Club, to raise funds for the local domestic violence shelter. In addition, she organized a food drive on the Tonkawa campus to benefit the shelter. Through her efforts, the shelter received over \$300 worth of non-perishable foods. Shannon is currently coordinating efforts on the campus to engage and enlighten students about sexual assault and domestic violence, especially during the month of April, which is National Sexual Assault Awareness Month. Shannon Fish clearly demonstrates a commitment to grass-roots community organizing in her efforts to educate her fellow students about domestic violence, and by encouraging them to become vocal advocates themselves. Her leadership on this important issue makes her a Newman Civic Fellow.





## Newman Civic Fellows

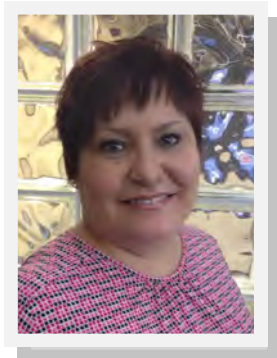
### Ms. Corrynn Franklin, East Central University



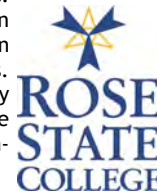
Corrynn Franklin is a junior at East Central University and will graduate in the spring of 2015. Corrynn has emerged as the leader in local efforts to empower the unemployed and the underemployed to better themselves. She has established Ada Jobs for Life, a character development program through which participants learn to set goals and overcome behaviors that hindered them in the past. Corrynn is a tireless worker with exceptional organizational and leadership abilities she developed in her eight-year Navy career. She has inspired program participants, program workers and program supporters. Ada Jobs for Life has the potential to improve lives and bring drastic changes in participants' standard of living for many years after they complete the program.



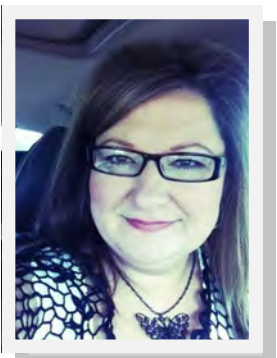
### Ms. Robin Goodiron, Rose State College



Robin Goodiron, a sophomore at Rose State College in Oklahoma, is majoring in Native American Studies, and her student leadership is likewise focused on Native American needs. Her active role as President of the American Indian Association has revitalized the student organization and its engagement as a vital force on the campus. She is similarly engaged in the Native Community organizing annual events important to the Native American Church and her Seneca Cuyahoga community.

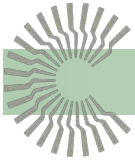


### Ms. Shelly Joiner, Eastern Oklahoma State College



Shelly Joiner, a second-year student at Eastern Oklahoma State College, is a member of the Honors Program and serves as president of Eastern's Phi Theta Kappa (PTK) Honor Society. For the past two years, Shelly assisted with PTK's voter registration competition and was instrumental in the success of the week-long event. PTK members provided a variety of activities designed to raise awareness and register voters. By registering an additional 11.1 percent of Eastern's student population, the PTK members received first-place honors from Oklahoma Campus Compact in the statewide competition for the fourth consecutive year. Shelly is also actively engaged in the Oklahoma Blue Thumb (OBT) program, a statewide education program dedicated to promoting clean and healthy water ecosystems in Oklahoma. As an active member of OBT, Shelly helps provide the state of Oklahoma with invaluable data through water monitoring.





## Newman Civic Fellows

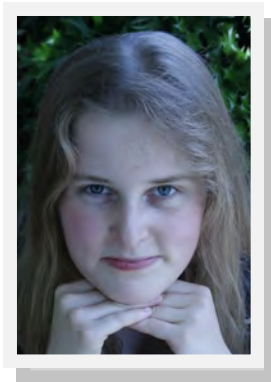
### Ms. Rashida Jones-Frazier, Oklahoma State University-Oklahoma City



Rashida Jones, a second year student at Oklahoma State University - Oklahoma City, is a student who exemplifies how to overcome poverty and negative influences. Rather than continuing down a road of crime and bad decisions, Rashida decided she wanted to go to college, get a degree in early childhood development and eventually own a daycare center. While working toward her initial goal, she set her sights on an even higher goal of founding a daycare to serve special needs/sick children by getting a nursing degree. Rashida has blossomed into an exemplary student and human being, with the goal of continuous improvement, encouragement and leading by example. She gives back to both the student body and the community. Whether it's a campus event, a regional meeting, a mentorship opportunity, the Oklahoma Humane Society, YWCA, Regional Food Bank, a nursing home or church - Rashida is there 100%. Her greatest goal is to be an example to her children. Her accomplishments and history of positive influences serve her infectious desire to give back and overcome barriers.



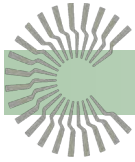
### Ms. Lucy Mahaffey, University of Oklahoma



Lucy Mahaffey is a sophomore from Norman, Oklahoma, with a dual major in International & Area Studies and in Anthropology at the University of Oklahoma. She began working on a project to understand the issue of human trafficking while in high school, after learning about this form of modern slavery through a film. She initially worked with a statewide coalition, Oklahomans Against Human Trafficking (OATH) helping them to develop a publicity campaign, fundraising drives, and "survival kits" to provide assistance to rescued children. She has participated in numerous public forums to educate the public and to raise awareness of the problems Oklahoma faces with trafficking, including a panel for World Literature Today Student Advisory Board and the Oklahoma State Bar Association. Lucy won a \$10,000 Davis Project for Peace Fellowship grant to develop a curriculum for Oklahoma high school students. The goal of the curriculum is to educate and empower young people to take action to end human trafficking. She is piloting the project this semester and will publish the curriculum for faculty across the state. Lucy's leadership in her community and her ability to create change make her an asset to the University and the State.

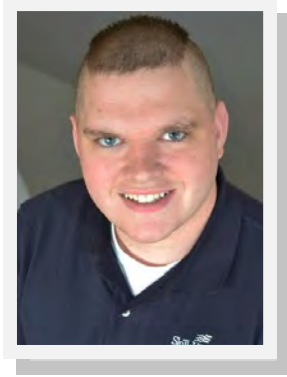


The UNIVERSITY of OKLAHOMA



## Newman Civic Fellows

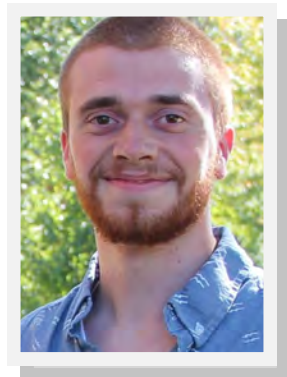
### Mr. Cody McPherson, Oklahoma State University Institute of Technology



Cody McPherson has volunteered over 1,000 hours in Oklahoma and District IV in SkillsUSA. He works with the Community Food Bank of Northeast Oklahoma, the March of Dimes, and raises money for high school and career technical students for a summer leadership academy. Cody has worked with SkillsUSA since he was 16. He has served on the board and teaches leadership classes across the nation to students (teen and adult) pursuing their goals in the workforce. He is the Chairman for SkillsUSA Oklahoma Alumni and Friends and the Region IV Representative for SkillsUSA Alumni and Friends Executive Board. Cody represents nine states to ensure that students are prepared for workforce needs. Mr. McPherson also began a scholarship fund sending two students to leadership academy for one week each summer. Cody works with the Community Food Bank, taking 160+ special needs students to work at the food bank. He also has a special interest in the March of Dimes and their work with premature children. He advocates for both the parents and the children. Cody McPherson's instructors have great praise for him both in and out of the classroom. He is dedicated to impacting society on a local, state, and national level.



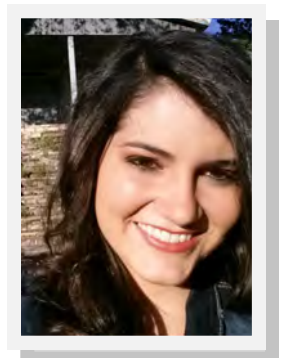
### Mr. Charles McQuigg, Northeastern Oklahoma A&M College



Charles McQuigg is a sophomore at Northeastern Oklahoma A&M College. Charlie's leadership abilities exemplify Dr. Newman's belief in the power of the individual to make a difference in the world. Charlie stands up for what he believes in and his sincerity in his beliefs naturally draw people to his causes. Through Charlie's leadership in the Sierra Coalition a campus-recycling program was brought back to life. Charlie developed a proposal for recycling at NEO that was taken before the administration and within one semester recycling was alive and well on-campus. Through his efforts Charlie not only helped improve the look of the campus but also has helped its small community begin to do its part in the larger global issue of recycling. Charlie was also instrumental in revitalizing the campus news station. Charlie helped lead the efforts to create a student led weekly YouTube broadcast to bring pertinent issues to students attention. Charlie is a natural leader and his abilities have helped him be successful in putting pertinent issues in front of the individuals who can make changes.

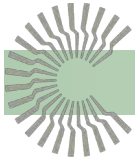


### Ms. Faith Mincher, Southwestern Christian University



Faith Mincher, an energetic leader and junior at Southwestern Christian University, holds numerous leadership roles at the University and in the community. She mentors, tutors, and advocates for the well-being and restoration of developing children. For the past two years, Faith has been actively engaged as a volunteer for Jeddiah, a local non-profit organization which serves children without mothers in the home. She serves as a consistent "mother figure" for children and has a passion for providing positive reinforcements for the betterment of their childhood experience. Faith is a leader and organizer of the "Free Camp" committee, which provides summer camp experiences for children from broken homes. She is also active as an after-school tutor for low-income students in the Oklahoma City metro area.





## Newman Civic Fellows

### Ms. Kylie Pethoud, Northwestern Oklahoma State University



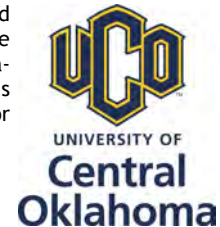
Kylie Pethoud, a junior at Northwestern Oklahoma State University, has already chosen a life of public service as a Social Work major. Kylie already works part time in her chosen field at the New Beginnings Domestic Crisis Center in Alva. She plans to pursue a Masters in Social Work and would like to find a career in public policy. Kylie has been selected as the Department of Social Sciences legislative intern for 2014. She will spend two weeks at the Oklahoma State Capitol working with Senator Bryce Marlatt during the final two weeks of the legislative session. Kylie understands the importance of combining a “grassroots” understanding of social issues with formal policy development in order to effect social change. She maintains a good GPA and is a member of the National Association of Student Social Workers and the Social Workers of Tomorrow local chapter.



### Ms. Elizabeth Rodriguez, University of Central Oklahoma



Elizabeth Larios Rodriguez, a fourth year student leader, is an advocate for women’s education and empowerment. Through her education in business and French she hopes to help women in least developed countries develop entrepreneurship skills so they may better themselves, their families, their villages, and their economies. Elizabeth plans to use her boundless energy and enthusiasm to carry this vision forward in the near future as she has recently been hired by Youth for Christ International to serve in Gambia, Africa after graduation. She is excited to serve this community and share her passion for the advancement of educational initiatives for women.

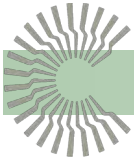


### Ms. Taylor Scalf, Southeastern Oklahoma State University



Taylor Scalf, a sophomore in the Early Intervention and Child Development major from Marlow, Oklahoma, has made significant contributions to her campus and local community during her first two years at Southeastern Oklahoma State University. Taylor helped established R.A.K. (Random Acts of Kindness) on campus. This organization encourages fellow students to embrace small acts of kindness and to never underestimate the power of simple gestures. One example is house and yard work for elderly community members who live close to campus. Taylor also serves a Savage Storm Leader assisting incoming freshman with the transition into higher education and as a Community Hall leader in university housing. Taylor is a Southeastern cheerleader and actively involved in the Fellowship of Christian Athletes and Baptist Collegiate Ministries. Taylor also is engaged in the classroom as evidenced by an overall GPA of 3.60.





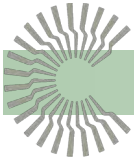
## Voter Registration Contest Winners Received Awards at Oklahoma State Regents Meeting

The institutions winning each of the three categories (small, mid-sized and large institutions) in the 2013 Voter Registration Contest were recognized at Oklahoma State Regents monthly meetings. The representatives for Eastern Oklahoma State College, Northern Oklahoma State College and the University of Central Oklahoma are shown with their awards.

### Eastern Oklahoma State College

Due to inclement weather in December the team from Eastern Oklahoma State College traveled to the January State Regents meeting. Shown below with their award after its presentation in the State Regents meeting are students Sara Davidson, Charitee Evans, Jeanette Gonzalez, Chelsea Hofegartner, Shelly Joiner, Glen Kendrick and Keifer Shearer. They are accompanied by Ms. Brenda Kennedy, Computer Science Department Chair and Phi Theta Kappa Advisor, and EOSC President Stephen Smith.





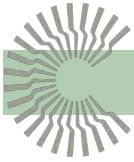
## Voter Registration Contest Winners Received Awards at Oklahoma State Regents Meeting

Northern Oklahoma College

Shown below receiving the award from Chancellor Glen D. Johnson and State Regents Chair James D. “Jimmy” Harrel for Northern Oklahoma College at the December State Regents meeting are students Shannon Fish from the Tonkawa campus, Angela Heitfeld from the Enid campus, and Emily Edens from the Stillwater campus. They are accompanied by Mr. Scott Haywood, English Instruc-

tor on the Tonkawa campus, Mr. Kenny Bollwerk, Residence Life Director on the Enid campus, Ms. Sherryl Nelson, Assistant Registrar on the Stillwater campus, Mr. Jason Johnson, Vice President for Student Affairs, and NOC President Cheryl Evans.





## Voter Registration Contest Winners Received Awards at Oklahoma State Regents Meeting

University of Oklahoma

The University of Central Oklahoma team was represented in the December award presentation by student Shel Millington, Dr. Janelle Grellner, Professor of Psychology and Assistant Director of the American Democracy Project, Ms. Dana Jackson, Archivist, Max Chambers Library, and both current UCO President Don Betz and past UCO

President Roger Webb. They are shown below with Chancellor Glen D. Johnson and State Regents Chair James D. “Jimmy” Harrel.



*The* UNIVERSITY of OKLAHOMA



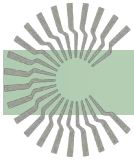
---

### 2014 Voter Registration

In the spring Oklahoma Campus Compact will convene an advisory committee to prepare for the 2014 Campus Vote Initiative, which includes voter registration, education, and participation. One idea is to consider significantly expanding the parameters of the contest beyond one week in September. Many campuses begin distribution of voter registration forms at summer student orientations and events, and by law registration is open until 24 days

before an election. A question has been raised as to whether students registered out of state should be counted for contest purposes. Other issues concern the various registration hurdles students encounter with frequent changes of address, possible name change through marriage, and other factors. OkCC welcomes all suggestions from its member institutions. Contact Debbie Terlip at [dterlip@osrhe.edu](mailto:dterlip@osrhe.edu) or 405-225-9128.





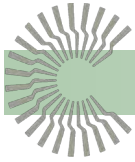
## OkCC 2014 Civic/Community Engagement Workshop

OkCC's annual workshop featured some of the highlights from the 2013 Heartland Conference, and best and emerging practices in various aspects of community engagement. Faculty members from Fort Hays State University in Kansas and the University of Missouri gave demonstrations in the use of technology for virtual service-learning and service-learning reflection in online education. Representatives from the Regional Food Bank of Oklahoma and Langston University described operations for campus food pantries. A student leader from Oklahoma State University outlined the Cowboy Kitchen program, which is a student-led initiative to share leftover food from campus events and cafeterias and local restaurants with local shelters. Managers from the Oklahoma Risk Management Program, the Oklahoma Attorney General's Office, and the Oklahoma State University Risk

Management Program discussed legal and liability issues involved with community engagement activities. Finally, a faculty member from the University of Central Oklahoma shared her experiences in designing and conducting on-campus service-learning for commuter students. Workshop presentations and materials shared are available on the Oklahoma Campus Compact website at <http://www.okhighered.org/okcampuscompact/conf-workshop-archives.shtml>



Workshop presenters for Campus Food Resource Partnerships are: Arthur Younger, Urban Community Affairs Coordinator, Center for Community Engagement, Langston University; Linda Tillman, Director, Center for Community Engagement, Langston University; John Bobb-Semple, Project Manager, Community Initiatives, Regional Food Bank of Oklahoma; and Andrew Cole, student and Director of Cowboy Kitchen, Oklahoma State University.



## Professional Development

### 2014 Heartland Regional Campus Compact Conference—Request for Proposals

Plan on joining us in Lincoln, Nebraska next fall for the 2014 Heartland Regional Campus Compact Conference! The link to the Request for Proposals for concurrent sessions can be found on the OkCC website at <http://www.okhighered.org/okcampuscompact/>. The submission deadline is May 15, 2014. For further information contact either Debbie Blanke at 405-225-9145 or [dblanke@osrhe.edu](mailto:dblanke@osrhe.edu), or Debbie Terlip at 405-225-9128 or [dterlip@osrhe.edu](mailto:dterlip@osrhe.edu).



### The Community College National Center for Community Engagement 23rd Annual International Conference

Themed Connectivity through Service Learning and Civic Engagement, this conference will be Tuesday, May 20 through Thursday May 22, 2014 at the DoubleTree Paradise Valley Resort in Scottsdale, AZ. For conference information and to register please visit the website at <http://www.mesacc.edu/engagement> or contact Lyvier Conss at 480-461-6281.

### Diving In: Institute for New Community Service-Learning Professionals

This gathering, designed for those new to civic and community engagement roles, will provide opportunities and tools to acquire knowledge, build skills, engage with colleagues and reflect on topics and issues that will enable us to develop competence, confidence, and support in our work and in our lives. The Institute curriculum is based on Campus Compact's *Looking In Reaching Out* publication, which is a reflective guide for service-learning professionals. The 2014 Diving In Institute is co-hosted by Campus Compact and the University of Georgia.

June 2-4, 2014

University of Georgia  
The Georgia Center  
Athens, GA

#### Session Topics Include:

- Understanding the Mission, Culture, and Organization of Institutions of Higher Education
- What Does High-Quality Community Service-Learning Look Like?
- Developing Reciprocal, Mutually Beneficial Community Partnerships
- Institutionalization Efforts and Your Future in the Work

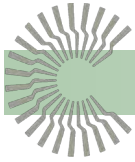
Register now at <http://www.compact.org/events/>

### Eastern Region Campus Compact Conference—Call for Proposals

The Eastern Region Campus Compact Conference invites Workshop and Poster Session Proposals for the Fourth Annual Conference which will be held October 15 - 17, 2014 at the Downtown Omni Hotel in Jacksonville, Florida. Proposals should be based on the following theme: *Moving Us Forward - Fifty Years On: From Civil Rights to Critical Engagement*.

For information on submission information including conference mission statement, goals, and session framing questions, contact Michael Norris at Florida Campus Compact at [michaelnorris@floridacompact.org](mailto:michaelnorris@floridacompact.org).

Proposal deadline is 5:00 PM (EDT), Thursday, May 1, 2014.



## Professional Development

### Journal of Higher Education Outreach and Engagement

As a sponsor of the *Journal of Higher Education Outreach and Engagement*, Campus Compact is pleased to announce that the latest issue 18(1), March 2014 has been published. It can be found at <http://openjournals.libs.uga.edu/index.php/jheoe/index>.

Campus Compact members are highlighted in Waters and Anderson-Lain's examination of online survey tools to discover unique concepts that can advance formative and summative quantitative assessment options.

As part of the commitment to supporting high-quality research, Campus Compact values the space the Journal provides for dialogue on important civic engagement issues. To learn more about the Journal and how to contribute an article, please visit the Journal's website.



*Journal of Higher Education  
Outreach & Engagement*

---

### New Book on Service Learning and Social Enterprise

OkCC members may want to check out *How High is Up? The Rise, Fall, and Redemption of a Sam M. Walton SIFE Fellow*, authored by Oklahoma State University alumni Dr. Curtis DeBerg, faculty in the College of Business at California State University, Chico. The book chronicles Dr. DeBerg's experiences with Students in Free Enterprise (SIFE) and the Wal-Mart organization, and explains how he combines community service learning with social entrepreneurship to contribute to humanitarian capitalism.

*Part memoir, part expose, part manifesto, it takes the reader on an intellectual journey into the uses and abuses of community service programs. DeBerg is a fine storyteller, and his personal energy and vision radiate from every page. The story he tells is especially timely given the choice our country—and our planet—faces as to how and for whose benefit we marshal the creative energies of a market economy.*

—Edward A. Zlotkowski, Professor,  
English and Media Studies, Bentley  
University, 2010, Lifetime Achieve-  
ment Award for Service Learning and  
Civic Engagement, International Con-  
ference on Service-Learning and En-  
gaged Research

