

OSRHE Task Force on The Future of Higher Education

OSRHE Task Force on The Future of Higher Education

- Very timely initiative.
- Higher education has never been more vital to a state's economy and its citizens' well being.

BUT

- Higher education under great stress in part because of declining state support.
- New strategies to increase college participation and completion rates are imperative.

OSRHE Task Force on The Future of Higher Education

Higher Education Completion – The Value Proposition

- Economic competitiveness at the state and national level.
- The education premium for individuals.
- Social equity and the American Dream.

OSRHE Task Force

The College Completion Imperative

The Value Proposition: Economic Competitiveness

- Workforce demands now and in the future.
- Center for Education and the Workforce Report (Georgetown University).
- America's alarming decline in college completion rates vs international competitors.

OSRHE Task Force

The College Completion Imperative

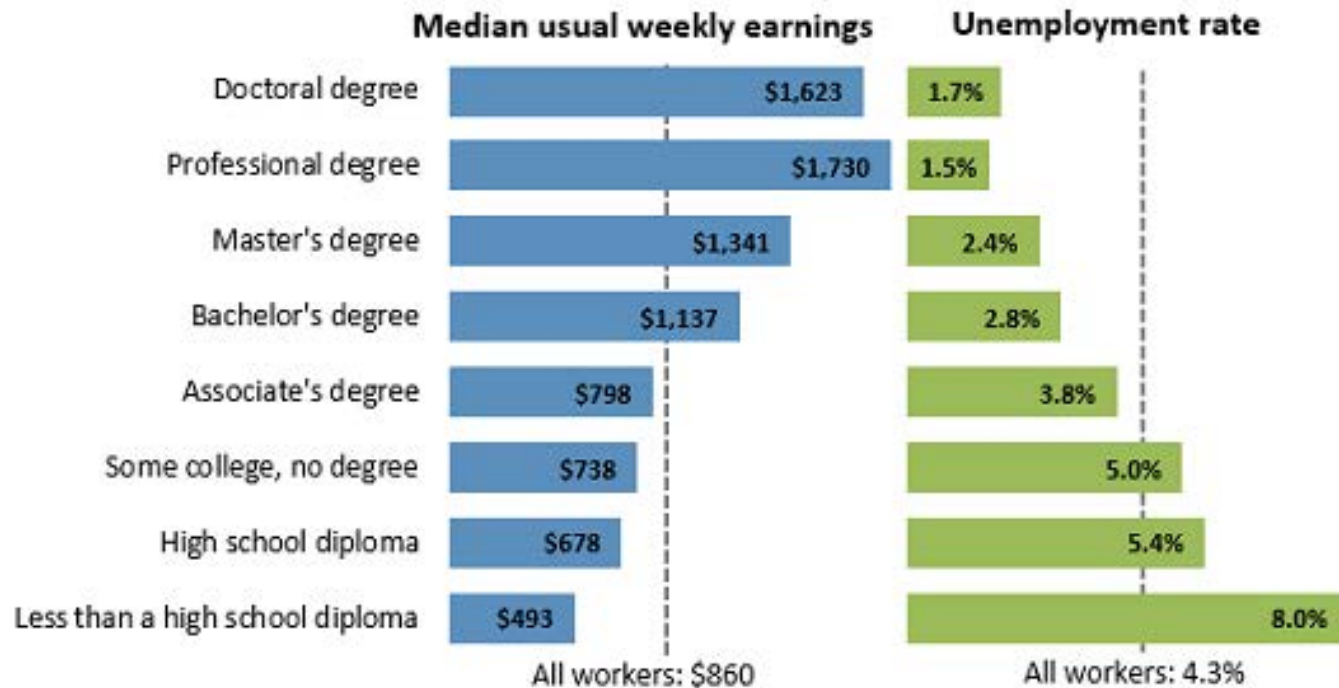
The Value Proposition:

The Education Premium for graduates.

OSRHE Task Force

The Education Premium

Earnings and unemployment rates by educational attainment, 2015



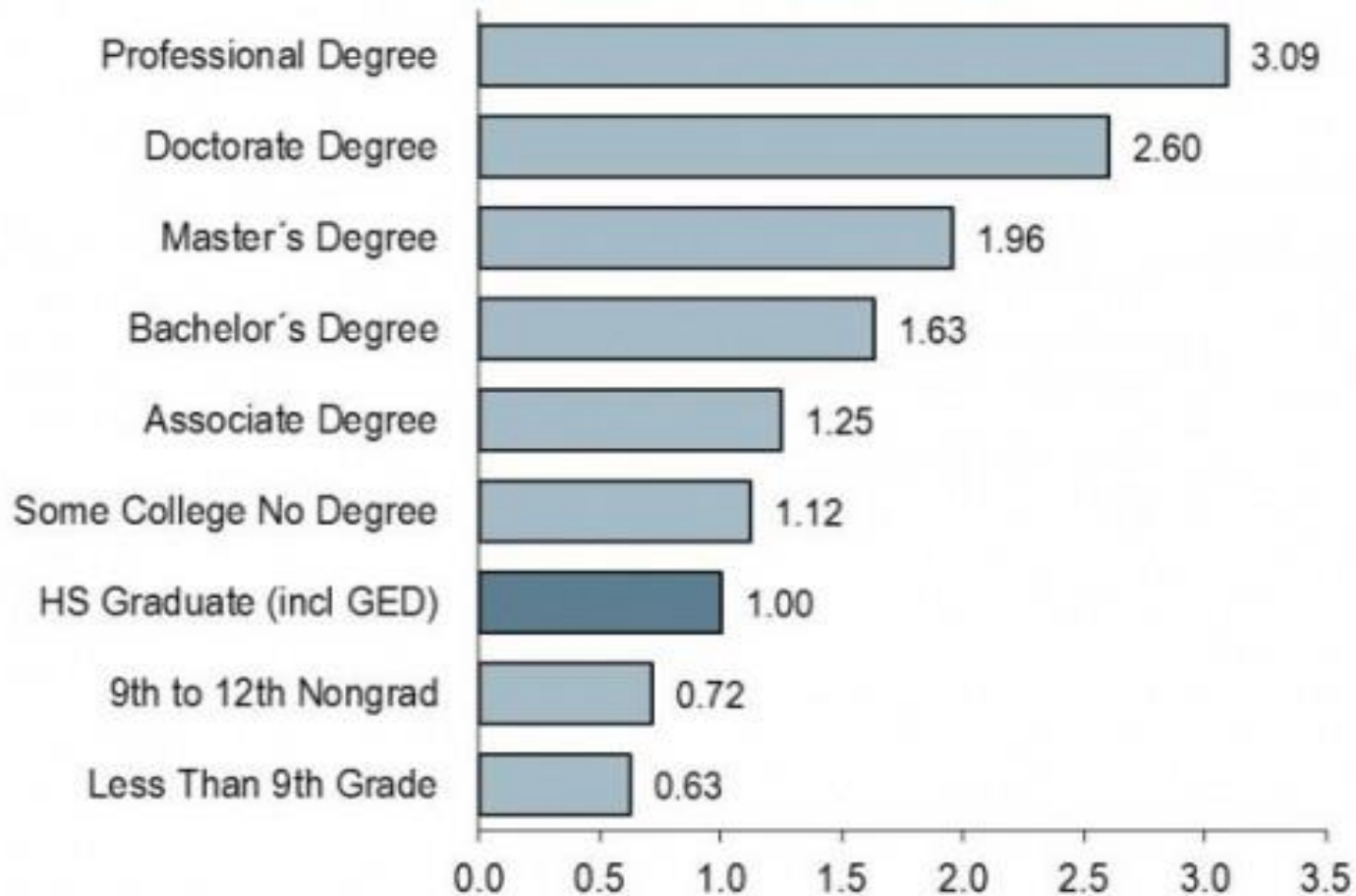
Note: Data are for persons age 25 and over. Earnings are for full-time wage and salary workers.
Source: U.S. Bureau of Labor Statistics, Current Population Survey

OSRHE Task Force

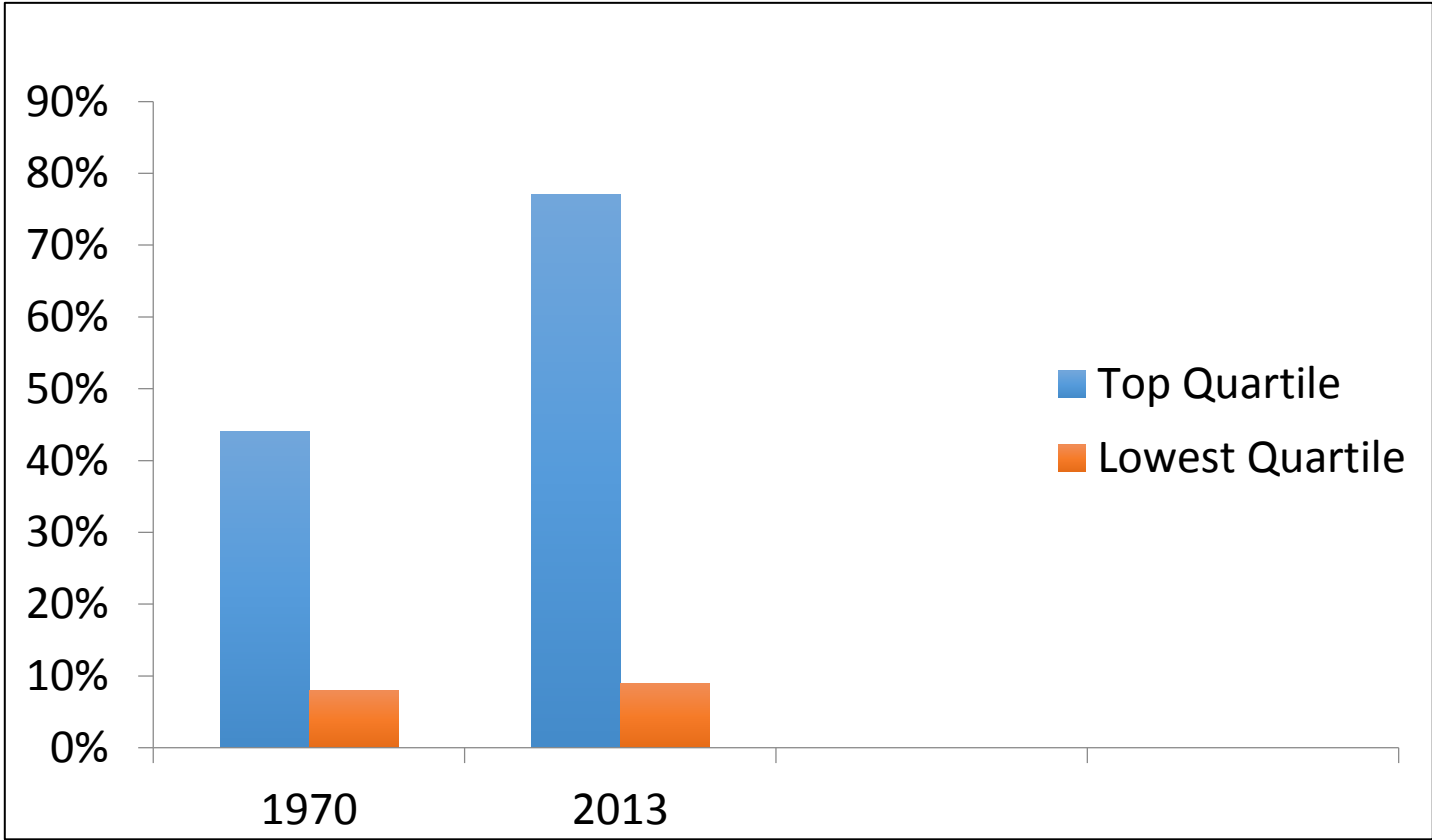
The College Completion Imperative

The Value Proposition:
Social equity and the American Dream.

Lifetime Earnings by Education Level



Social Equity and the American Dream: College Degree Attainment by Income Level



OSRHE Task Force

The Completion Imperative

Proportion of adults with 2-year degree or higher:

- National average: 40.43%
- Oklahoma: 31.3%

Proportion of adults with 4-year degree:

- National average: 30.6%
- Oklahoma: 24.1%

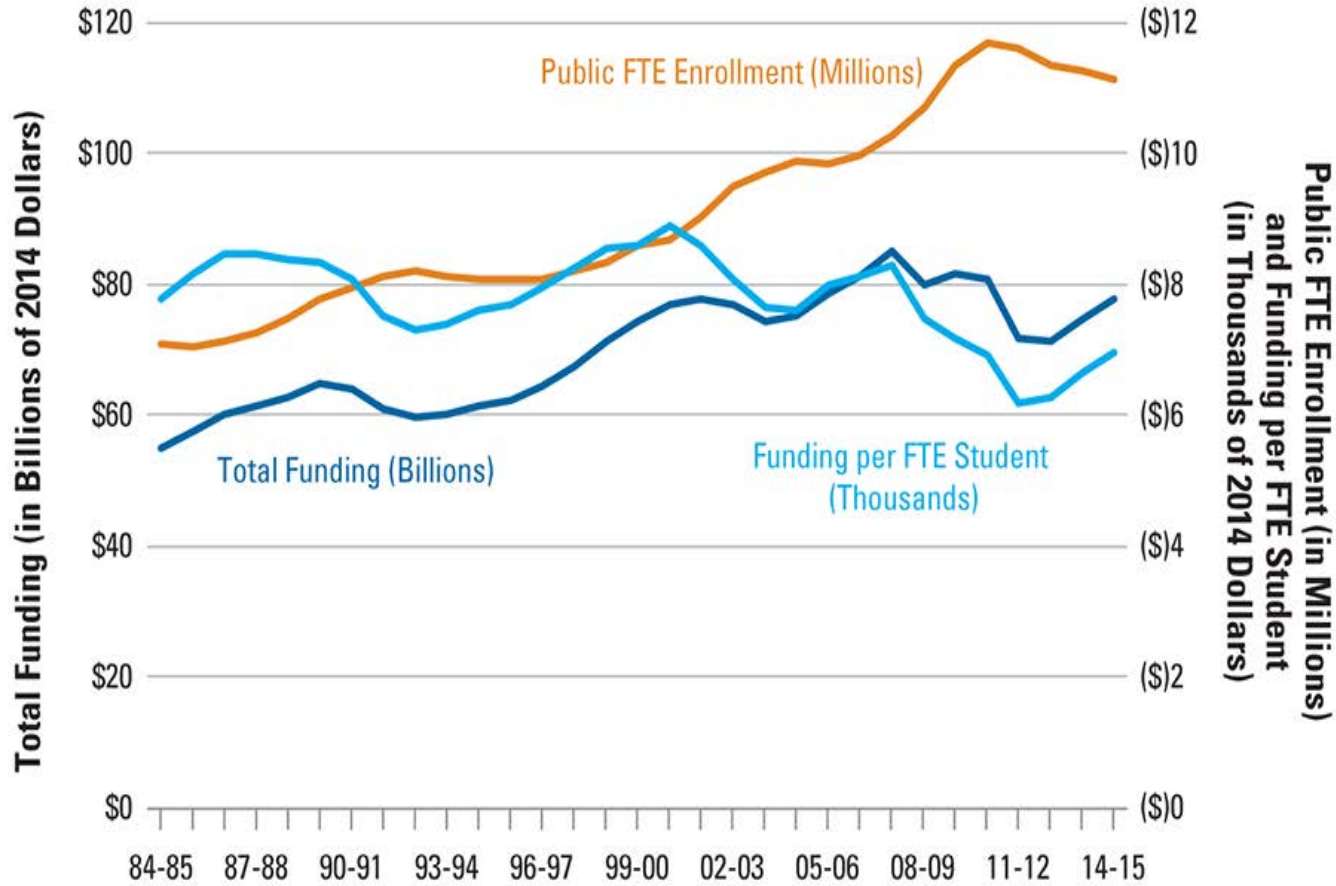
US Census Bureau, 2016

OSRHE Task Force on The Future of Higher Education

Despite the value of higher education for states and individuals, the funding model is stressed if not broken:

- State investment is down
- Tuition levels are compromising access
- Student debt at an all-time high

Funding Model



OSRHE Task Force

State Funding per FTE

Appropriations per FTE FY2015-16

- National Average - \$7116
- Oklahoma - \$6148

Change in appropriations per FTE FY2011-16

- National Average – 15% decline
- Oklahoma – 27.6% decline

SHEEO Finance Report 2016

OSRHE Task Force

Total Education Revenue per FTE

Total education revenue per FTE, FY 2016

- National Average \$13,377
- Oklahoma \$11,879

Change in total ed revenue per FTE, FY2011-16

- National average 2.8% increase
- Oklahoma 4.2% decrease

SHEEO Finance Report, 2016

OSRHE Task Force

The Realities

- Higher education has never been more critical for the states' and nation's economic growth.
- Higher education credentials have become the surest path to a successful career and a high quality of life.
- For the foreseeable future, total higher education funding per FTE will be stable at best.
- To serve more students, higher education must find lower cost means of delivering high quality education.

OSRHE Task Force

The Challenge

Given these realities, what actions can Oklahoma take to ensure high quality higher education opportunities for the largest possible number of Oklahoma's citizens?

OSRHE Task Force Strategies to Consider

- Academic program innovations, including use of technology and online education.
- Higher Education system restructuring.
- Leveraging technology for increasing efficiencies and improving academic outcomes.

OSRHE Task Force Strategies to Consider

Academic program innovations

- Math pathways and co-requisite developmental education.

(Tenn Board of Regents, Maryland, Oklahoma)

- Online degrees.

(USNH, UMUC, ASU, Penn State)

OSRHE Task Force Strategies to Consider

Higher Education Restructuring

- Centralized services.
(University of Maryland System)
- Campus consolidations.
(Georgia, Maine, Pennsylvania)
- Strategic partnerships.
(Early college, 2-year/4-year alignment)

OSRHE Task Force Strategies

Leveraging technology

- Big data and data analytics – Academics.
(Georgia State University)
- Big data and data analytics - Business process reengineering.
- MOOCs.
(Georgia Tech, ASU)

OSRHE Task Force

The Future of Higher Education

- Task Force creation very timely.
- Task Force charge addresses the right issues.
- Task Force recommendations should be bold.
- Task Force has the opportunity to be a model for the nation.

OSRHE Task Force

The Future of Higher Education

THANK YOU!