

2. Demand

This section examines a number of indicators of demand: enrollment change versus workforce change, emergency certificates, and the student to educator ratios by subject area.

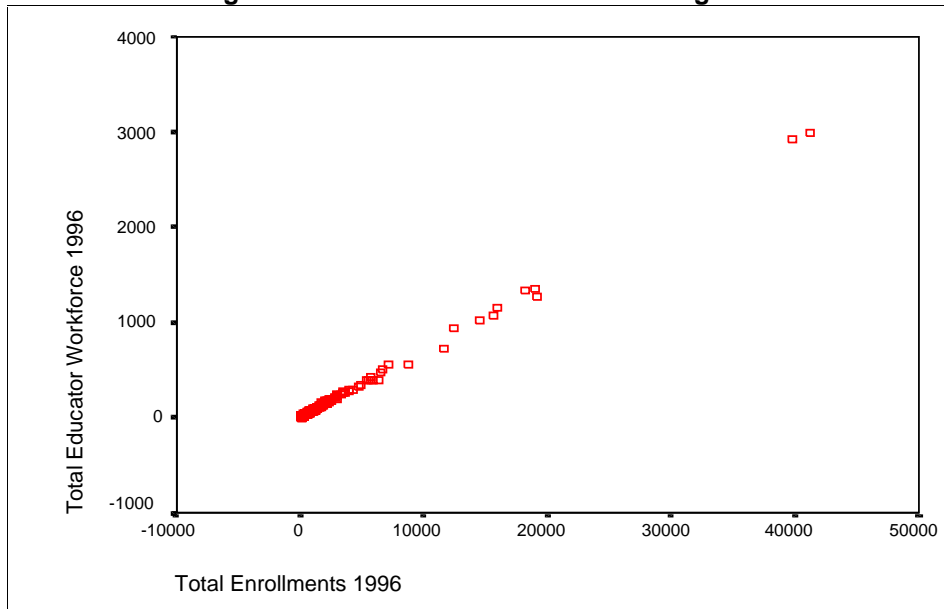
2.1. Demand Indicator: Enrollment Change versus Workforce Change

The number of educators providing services to a number of students is the result of the dynamic forces of supply and demand. How do districts of different sizes match the number of educators with the number of students?

- Figure 2 shows how stable the ratio of educators to students is as the size of the district changes—the ratio being about 13 students per educator over all the districts in the State of Oklahoma.

Each point in the graph represents a district. The points on the line represent how the district enrollments relate to the number of district educators.

Figure 2: Educator Workforce Plotted against Enrollments



This above graph, however, only represents one year of data. Districts experience considerable change over time in both their number of educators, and their number of students. Figure 3 shows a histogram of the distribution of change rates in the total educator workforce for districts. The result is a normal distribution over the more than 500 Oklahoma districts.

Figure 3: Change in the Educator Workforce 1995-96

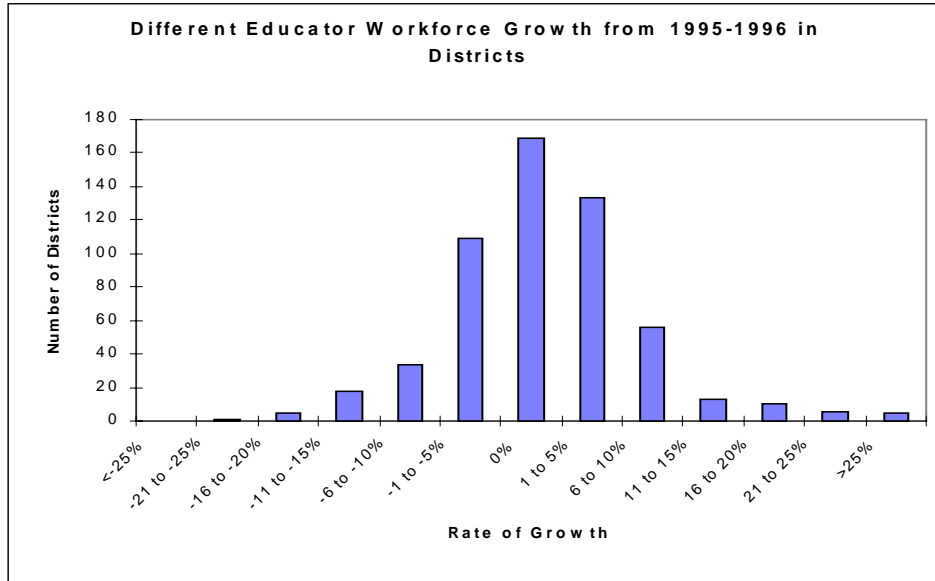


Figure 4 shows a histogram of the changes in total enrollments among all the districts. Here there is a bimodal distribution with considerable variation.

Figure 4: Differing Enrollment Growth from 1995-96 Among Districts

