

Oklahoma State Regents for Higher Education
Student Data Report
2005-06

Section III: Enrollments

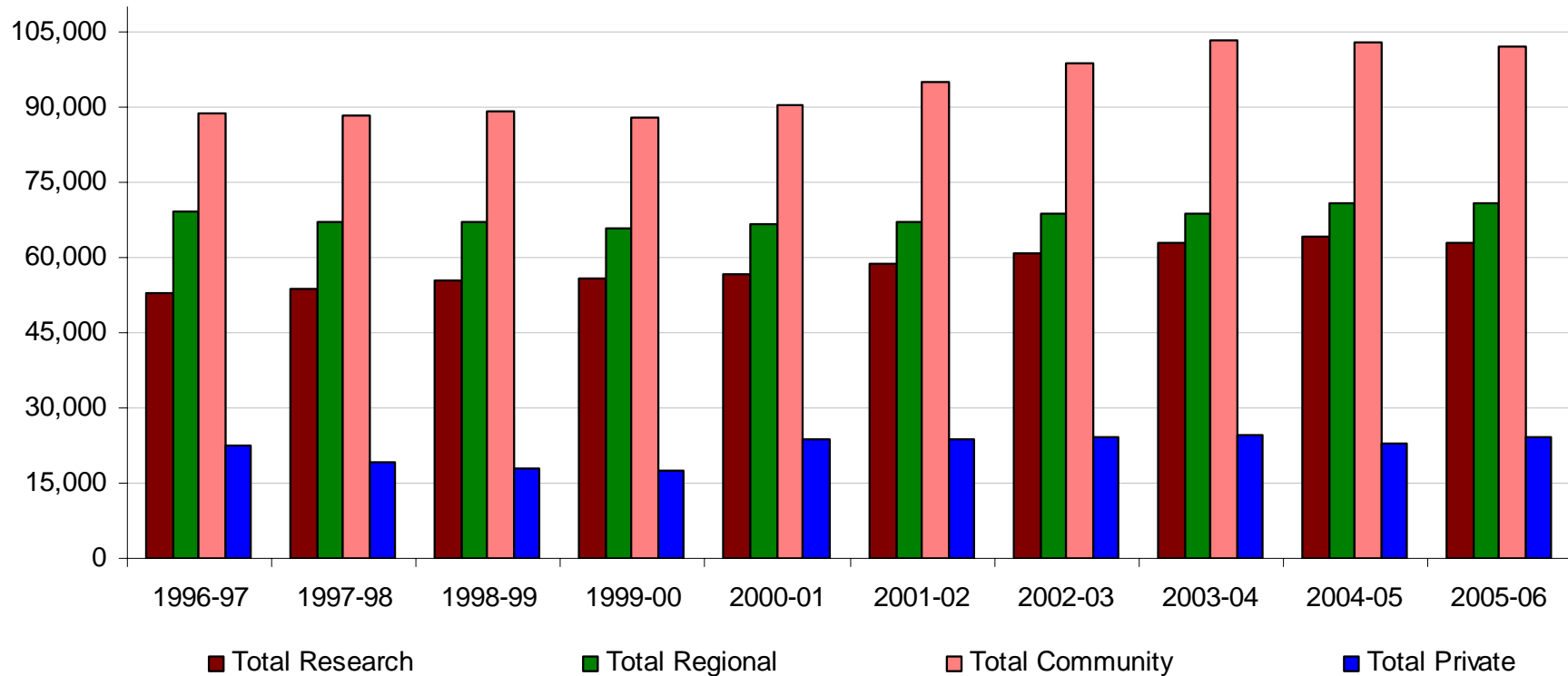
Ten-Year Comparison of Annual Unduplicated Headcount Enrollment

The following tables show the total number of unduplicated students enrolled in 40 of the 41 Oklahoma higher education institutions in 2005-06. One private institution did not report.

This table and graph compare annual unduplicated headcount for both public and private institutions for ten years. An annual unduplicated headcount counts each student only once for the academic year (summer, fall, and spring).

- Public higher education unduplicated headcount enrollment decreased from 210,823 in 1996-97 to 209,371 in 1997-98, then generally increased to 235,730 in 2005-06.
- Public higher education enrollment increased 11.8 percent overall during the 1996-97 to 2005-06 ten-year time period.

TEN-YEAR COMPARISON OF ANNUAL UNDUPLICATED HEADCOUNT ENROLLMENT 1996-97 TO 2005-06

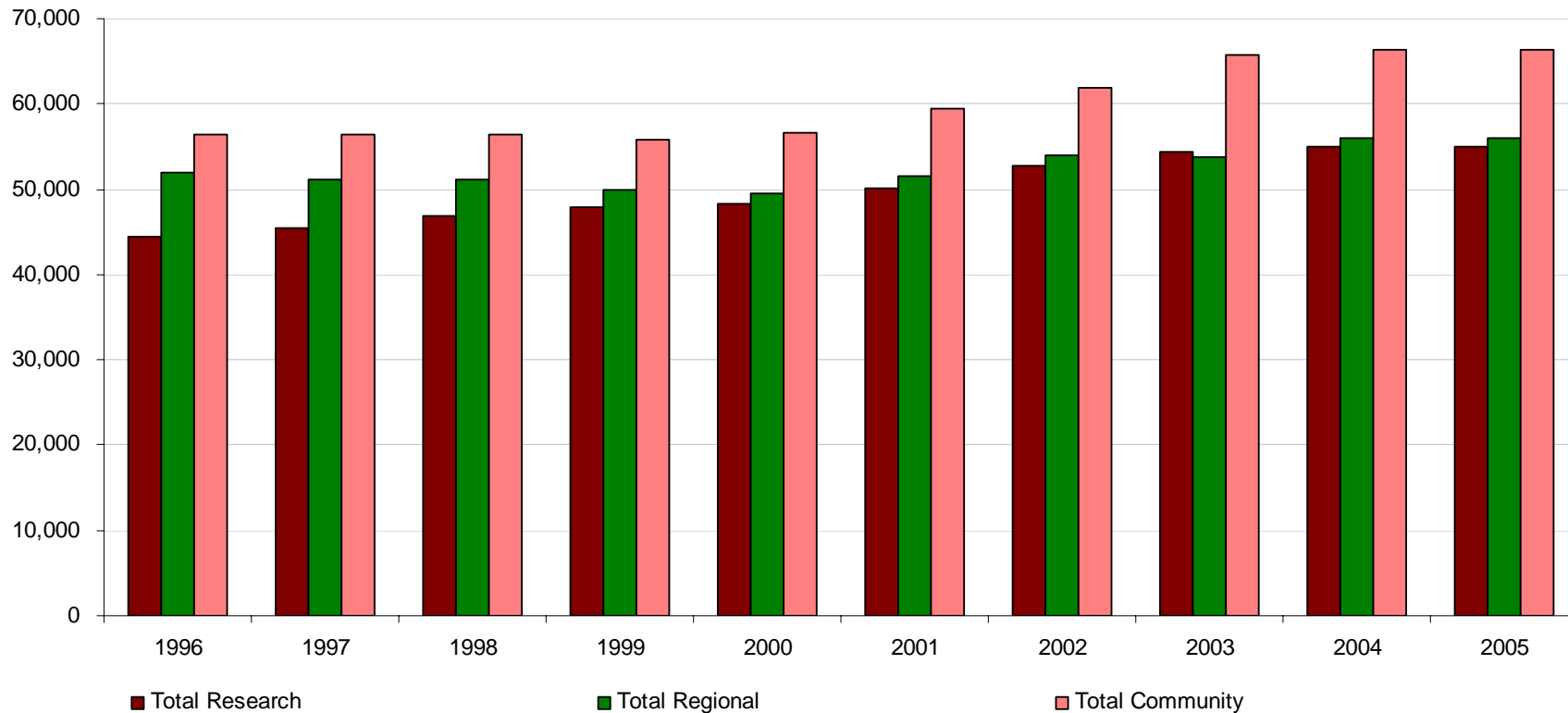


Ten-Year Comparison of Fall Unduplicated Headcount Enrollment at Public Institutions

The table and graph show 10 years of fall unduplicated headcount enrollment for the public institutions by research universities, regional universities, and community colleges. Students enrolled in more than one institution are attributed to only one institution.

- From fall 1996 to fall 2005, enrollments in the public institutions increased by 14.6 percent.
- Fall enrollments at research universities increased 21.4 percent over the ten-year timeframe. The regional universities increased 7.6 percent. The community colleges increased 15.6 percent.

TEN-YEAR COMPARISON OF FALL UNDUPLICATED HEADCOUNT ENROLLMENT AT PUBLIC INSTITUTIONS 1996 TO 2005



**TEN-YEAR COMPARISON OF FALL UNDUPLICATED HEADCOUNT ENROLLMENT AT PUBLIC INSTITUTIONS
1996 TO 2005**

Institution	1996	1997	1998	1999	2000	2001	2002	2003	2004	2005	Diff.
OU	22,315		23,446	23,655	24,146		26,210	27,099	27,427		18.6%
OU-HSC	2,593	23,152 2,846	2,741	2,907	2,735	25,052 2,829	2,951	3,103	3,317	26,457 3,520	35.8%
OSU	19,124	19,302	20,284	20,965	21,140	21,997	23,147	23,776	23,745	23,635	23.6%
OSU-CHS ¹	349	349	348	352	263	263	389	397	407	273	-21.8%
TOTAL RESEARCH	44,381		46,819	47,879	48,284		52,697	54,375	54,896		21.4%
UCO	14,469	45,449 13,826	14,083	14,092	13,989	50,141 14,530	15,128	14,220	15,348	53,885 15,709	8.6%
ECU	4,345	4,213	4,093	3,978	4,076	4,161	4,339	4,420	4,616	4,601	5.9%
NSU	8,321	8,193	8,349	7,962	8,035	8,512	8,929	9,225	9,416	9,515	14.3%
NWOSU	1,764	1,850	1,960	1,867	1,961	2,019	2,005	2,090	2,134	2,053	16.4%
SEOSU	3,734	3,833	3,744	3,642	3,703	3,854	3,890	4,051	3,919	3,895	4.3%
SWOSU	4,895	4,819	5,008	4,765	4,809	4,844	5,054	5,175	5,324	5,044	3.0%
CU	5,345	5,274	5,272	5,234	5,041	5,266	5,566	5,477	5,802	5,704	6.7%
LU	3,349	3,376	3,234	3,130	2,827	2,988	3,028	2,968	3,049	3,152	-5.9%
USAO	1,509	1,372	1,478	1,390	1,396	1,436	1,492	1,451	1,417	1,414	-6.3%
OPSU	1,365	1,258	1,099	1,144	1,189	1,242	1,241	1,166	1,198	1,080	-20.9%
RSU ²	2,834	3,088	2,882	2,610	2,550	2,785	3,226	3,480	3,686	3,716	31.1%
TOTAL REGIONAL	51,930	51,102	51,202	49,814	49,576	51,637	53,898	53,723	55,909	55,883	7.6%
CSC	2,091	1,968	1,925	1,824	1,856	1,771	2,022	2,193	2,255	2,111	1.0%
EOSC	1,791	1,711	1,824	1,944	1,908	1,960	2,032	1,957	2,004	1,623	-9.4%
MSC	1,574	1,595	1,588	1,528	1,615	1,747	1,772	1,837	1,898	2,062	31.0%
NEOAMC	2,156	2,055	2,137	1,910	1,875	1,776	1,819	2,047	1,992	1,912	-11.3%
NOC	2,075	2,215	2,407	2,392	2,505	2,763	2,925	3,527	4,181	4,523	118.0%
TCC	17,511	17,292	16,466	15,870	16,069	16,607	16,938	16,566	16,719	16,154	-7.7%
OSU-OKC	4,048	4,036	3,967	4,154	3,989	4,475	4,907	5,529	5,602	5,552	37.2%
OSUTB-OKM	2,186	2,277	2,246	2,283	2,382	2,337	2,639	2,636	2,623	2,650	21.2%
WOSC	1,499	1,661	2,272	2,214	2,238	2,173	1,987	2,030	1,849	1,948	30.0%
RCC	1,557	1,553	1,637	1,728	1,751	1,739	1,849	1,868	1,866	1,898	21.9%
CASC	1,879	2,090	1,801	1,764	1,902	2,165	2,266	2,403	2,652	2,423	29.0%
SSC	1,414	1,711	1,905	2,001	1,974	1,934	2,044	2,195	2,137	2,018	42.7%
RSC	7,759	7,382	7,500	7,400	7,276	7,427	7,863	9,245	8,302	7,969	2.7%
OCCC	8,949	8,875	8,679	8,795	9,229	10,529	10,844	11,806	12,254	12,486	39.5%
TOTAL COMMUNITY	56,489	56,421	56,354	55,807	56,569		61,907	65,839	66,334		15.6%
GRAND TOTAL	152,800	152,972	154,375	153,500	154,429	161,181	168,502	173,937	177,139	175,097	14.6%

SOURCE: OCR 2300-2.3 Fall 2005, 1/22/07. ¹OSU-CHS did not report Fall 2001 data; data are from Fall 2000. ²RSU began offering bachelor's degrees in fall 2000.

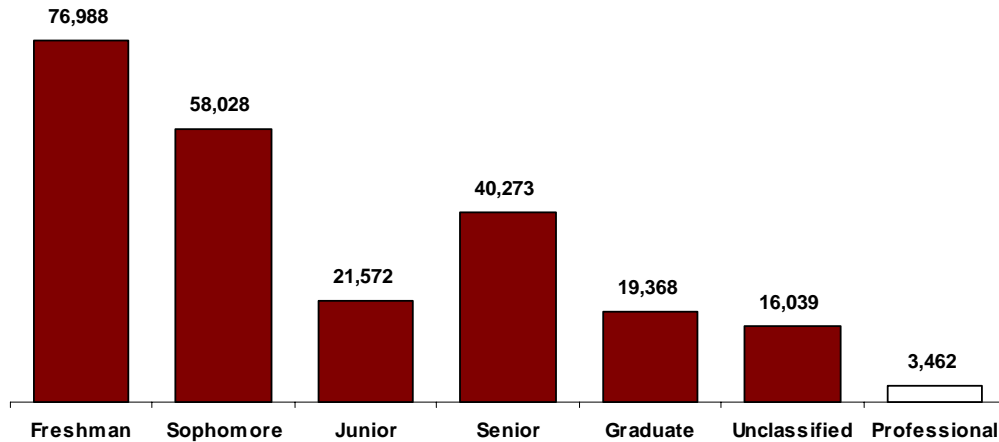
NOTE: Includes first-time freshmen from summer who continued in fall and includes nonresident aliens; does not contain concurrent high school enrollment.

Annual Unduplicated Headcount Enrollment by Gender and Class Level

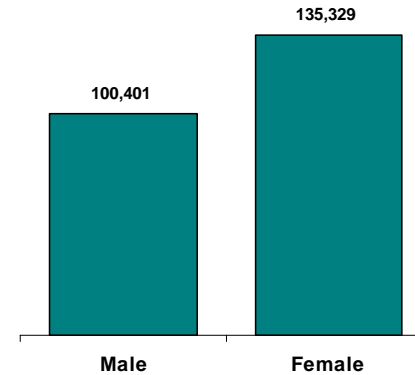
The table and graph show the total number of unduplicated students enrolled in 40 of the 41 Oklahoma higher education institutions in 2005-06, distributed by class level and by gender. One private institution did not report.

- At the public institutions, the freshman class consisted of 76,988 students or 32.7 percent of the public annual unduplicated headcount in 2005-06, the sophomore class consisted of 58,028 students or 24.6 percent, the junior class consisted of 21,572 or 9.2 percent, and the senior class consisted of 40,273 students or 17.1 percent.
- At the public institutions, the graduate and professional class levels consisted of 19,368 students or 8.27 percent and 3,462 students or 1.5 percent, respectively.
- At the public institutions, females outnumbered males in 2005-06 by 57.4 percent to 42.6 percent. In 1962, males outnumbered females in Oklahoma higher education by 65 percent to 35 percent. In the fall of 1972, males outnumbered females by 60 percent to 40 percent.

ANNUAL PUBLIC UNDUPLICATED HEADCOUNT
ENROLLMENT BY CLASS LEVEL
2005-06



ANNUAL PUBLIC UNDUPLICATED HEADCOUNT
ENROLLMENT BY GENDER
2005-06

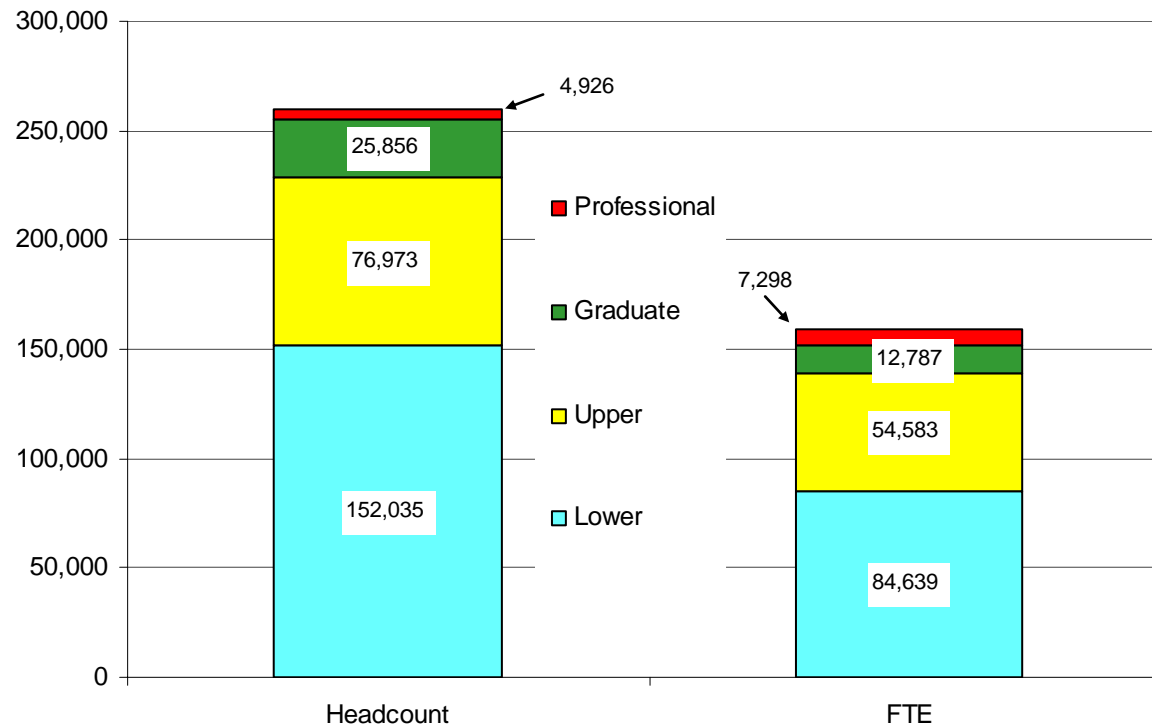


Annual Headcount and FTE Enrollment by Division

The table and graph show headcount and full-time equivalent (FTE) enrollment for 2005-06 by division of study (lower, upper, graduate, and professional). The annual full-time equivalent undergraduate enrollment is calculated by dividing the total number of credit hours enrolled in by undergraduate students by 30 and dividing the total number of credit hours enrolled in by graduate and professional students by 24. The reason for using 30 and 24 is that a full-time undergraduate student must take 15 credit hours per semester or 30 credit hours per year to complete a bachelor’s degree in four years. Graduate and professional students must take 12 credit hours per semester or 24 per year to complete most degrees on schedule.

- In 2005-06, public and private institutions had 259,790 students and 159,307 FTEs.
- Total public institutional headcount consisted of 144,881 (61.5 percent) lower division students, 65,141 (27.6 percent) upper division students, 22,246 (9.4 percent) graduate students, and 3,462 (1.5 percent) professional students.
- Total public institutional FTE consisted of 78,450 (55.6 percent) lower division FTEs, 46,190 (32.7 percent) upper division FTEs, 10,616 (7.5 percent) graduate FTEs, and 5,783 (4.1 percent) professional FTEs.

**ANNUAL PUBLIC AND PRIVATE HEADCOUNT AND FTE ENROLLMENT BY DIVISION
2005-06**



**ANNUAL HEADCOUNT AND FULL-TIME EQUIVALENT (FTE)* ENROLLMENTS BY DIVISION
2005-06**

Institution	Division									
	Lower		Upper		Graduate		Professional		All Students	
	Head Count	FTE	Head Count	FTE	Head Count	FTE	Head Count	FTE	Head Count	FTE
OU	5,433	5,443	17,240	12,896	8,353	3,820	0	0	31,026	22,159
OU-LAW	0	0	0	0	0	0	536	657	536	657
OU-HSC	0	0	1,007	907	916	718	1,881	2,780	3,804	4,405
OSU	7,983	7,400	13,305	10,151	5,700	2,705	1	1	26,989	20,257
OSU - VET MED	0	0	0	0	0	0	302	496	302	496
OSU-CHS	0	0	0	0	36	11	260	1,186	296	1,197
TOTAL RESEARCH	13,416	12,843	31,552	23,954	15,005	7,254	2,980	5,120	62,953	49,171
UCO	6,459	4,298	10,566	7,126	2,142	1,016	0	0	19,167	12,440
ECU	1,813	1,392	2,910	2,004	1,317	541	0	0	6,040	3,937
NSU	3,743	2,888	6,229	4,168	1,361	653	101	177	11,434	7,886
NWOSU	1,041	723	1,338	938	377	169	0	0	2,756	1,830
SEOSU	1,958	1,436	2,461	1,725	560	245	0	0	4,979	3,406
SWOSU	3,175	2,294	2,120	1,629	629	320	362	459	6,286	4,702
CU	4,656	2,628	2,506	1,555	691	303	0	0	7,853	4,486
LU	1,925	1,404	1,838	1,097	164	114	19	27	3,946	2,642
USAO	739	600	975	617	0	0	0	0	1,714	1,217
OPSU	641	495	715	536	0	0	0	0	1,356	1,031
RSU	3,532	1,967	1,700	786	0	0	0	0	5,232	2,753
TOTAL REGIONAL	29,682	20,125	33,358	22,181	7,241	3,361	482	663	70,763	46,330
CSC	3,032	1,582	0	0	0	0	0	0	3,032	1,582
EOSC	2,302	1,270	0	0	0	0	0	0	2,302	1,270
MSC	3,035	1,640	0	0	0	0	0	0	3,035	1,640
NEOAMC	2,897	1,632	0	0	0	0	0	0	2,897	1,632
NOC	6,626	3,502	0	0	0	0	0	0	6,626	3,502
TCC	26,586	10,587	0	0	0	0	0	0	26,586	10,587
OSU-OKC	8,850	3,624	0	0	0	0	0	0	8,850	3,624
OSU-TB, OKM	3,701	2,538	231	56	0	0	0	0	3,932	2,594
WOSC	2,962	1,319	0	0	0	0	0	0	2,962	1,319
RCC	3,260	1,427	0	0	0	0	0	0	3,260	1,427
CASC	3,451	1,867	0	0	0	0	0	0	3,451	1,867
SCC	3,005	1,515	0	0	0	0	0	0	3,005	1,515
RSC	12,366	4,933	0	0	0	0	0	0	12,366	4,933
OCCC	19,710	8,047	0	0	0	0	0	0	19,710	8,047
TOTAL COMMUNITY	101,783	45,483	231	56	0	0	0	0	102,014	45,539
TOTAL PUBLIC	144,881	78,450	65,141	46,190	22,246	10,616	3,462	5,783	235,730	141,039
TU	1,036	1,047	2,502	1,750	511	256	567	566	4,616	3,619
SNU	629	574	1,478	1,175	474	465	-	-	2,581	2,214
OCU	1,145	949	1,135	865	1,494	879	697	778	4,471	3,471
OBU	**	**	**	**	**	**	**	**	**	**
OC	1,090	977	812	650	364	232	-	-	2,266	1,859
ORU	979	986	3,097	2,253	622	292	200	171	4,898	3,702
MACU	318	236	641	381	5	1	-	-	964	618
BC	548	421	472	313	-	-	-	-	1,020	734
OWU	519	378	783	472	96	33	-	-	1,398	883
HFWBC	175	123	134	69	28	10	-	-	337	202
SWCU	125	89	211	132	-	-	-	-	336	221
St. G	590	410	567	335	16	4	-	-	1,173	749
TOTAL PRIVATE	7,154	6,189	11,832	8,393	3,610	2,171	1,464	1,515	24,060	18,268
GRAND TOTAL	152,035	84,639	76,973	54,583	25,856	12,787	4,926	7,298	259,790	159,307

SOURCE: UDSENR11, 1/22/07.

NOTE: May contain unclassified students and concurrent high school enrollments.

* Full-time equivalent (FTE): An annual FTE is calculated for an undergraduate by dividing the total number of credit hours enrolled by all undergraduate students by 30.

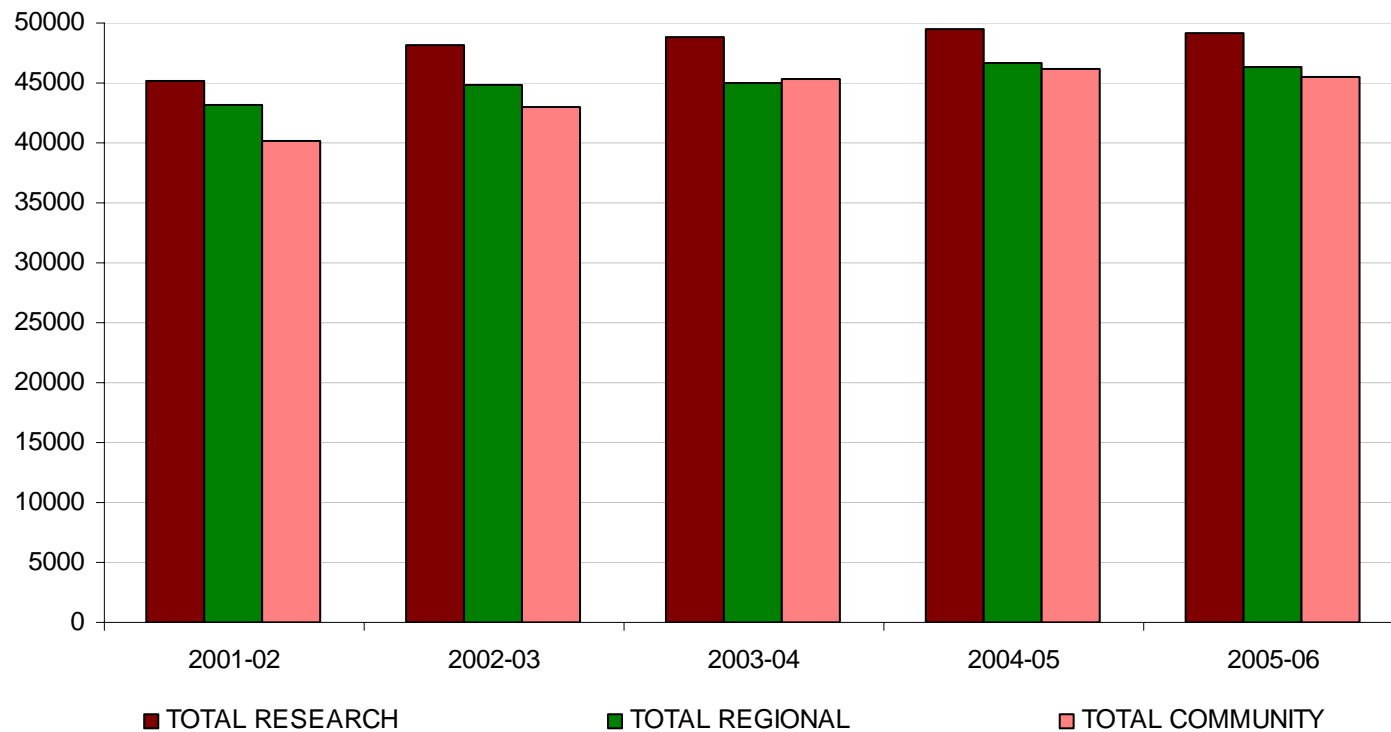
The graduate and professional FTE is calculated by dividing the total number of credit hours enrolled by all graduate and professional students by 24. Totals may not equal sums of columns due to rounding of calculations.

Five-Year Comparison of Annual Full-Time Equivalent (FTE) Enrollments

The table and graph show a five-year history with year-to-year comparisons of the annual FTE of all institutions.

- The public sector institutions have shown a 9.7 percent increase in annual FTE enrollments from 2001-02 to 2005-06 and a 0.9 percent decrease from 2004-05 to 2005-06.
- The research universities had an 8.9 percent FTE increase from 2000-01 to 2004-05. Regional universities increased 7.3 percent and community colleges increased 13.3 percent.

FIVE-YEAR COMPARISON OF ANNUAL FTE ENROLLMENTS AT PUBLIC INSTITUTIONS 2001-02 TO 2005-06



FIVE-YEAR COMPARISON OF ANNUAL FULL-TIME EQUIVALENT (FTE)¹ ENROLLMENTS 2001-02 TO 2005-06

Institution	2001-02		2002-03		2003-04		2004-05		2005-06		5-Year diff.
	FTE	1-Year diff.	FTE	1-Year diff.	FTE	1-Year diff.	FTE	1-Year diff.	FTE	1-Year diff.	
OU	21,471	4.3%	22,431	4.5%	23,262	3.7%	23,441	0.8%	22,816	-2.7%	6.3%
OU-HSC	3,448	8.5%	3,670	6.4%	3,896	6.2%	4,176	7.2%	4,405	5.5%	27.8%
OSU	19,308	4.5%	20,323	5.3%	20,793	2.3%	20,666	-0.6%	20,753	0.4%	7.5%
OSU-CHS ²	913	0.0%	1,780	95.0%	909	-48.9%	1,161	27.7%	1,197	3.1%	31.1%
TOTAL RESEARCH	45,140	4.6%	48,204	6.8%	48,860	1.4%	49,444	1.2%	49,171	-0.6%	8.9%
UCO	11,615	5.4%	11,927	2.7%	11,495	-3.6%	12,264	6.7%	12,440	1.4%	7.1%
ECU	3,656	2.2%	3,811	4.2%	3,818	0.2%	4,015	5.2%	3,937	-1.9%	7.7%
NSU	7,160	7.5%	7,667	7.1%	7,940	3.6%	7,997	0.7%	7,886	-1.4%	10.1%
NWOSU	1,719	2.1%	1,756	2.2%	1,818	3.5%	1,870	2.9%	1,830	-2.1%	6.5%
SEOSU	3,370	5.5%	3,387	0.5%	3,480	2.7%	3,466	-0.4%	3,406	-1.7%	1.1%
SWOSU	4,526	2.7%	4,697	3.8%	4,821	2.6%	4,878	1.2%	4,702	-3.6%	3.9%
CU	4,226	5.0%	4,411	4.4%	4,387	-0.5%	4,586	4.5%	4,486	-2.2%	6.2%
LU	2,586	6.9%	2,586	0.0%	2,560	-1.0%	2,637	3.0%	2,642	0.2%	2.2%
USAO	1,190	1.2%	1,220	2.5%	1,167	-4.3%	1,159	-0.7%	1,217	5.0%	2.3%
OPSU	1,073	3.8%	1,054	-1.8%	1,013	-3.9%	1,121	10.7%	1,031	-8.0%	-3.9%
RSU ³	2,054	20.7%	2,396	16.7%	2,574	7.4%	2,696	4.7%	2,753	2.1%	34.0%
TOTAL REGIONAL	43,175	5.6%	44,912	4.0%	45,073	0.4%	46,689	3.6%	46,330	-0.8%	7.3%
CSC	1,420	1.8%	1,637	15.3%	1,701	3.9%	1,677	-1.4%	1,582	-5.7%	11.4%
EOSC	1,473	2.8%	1,529	3.8%	1,445	-5.5%	1,477	2.2%	1,270	-14.0%	-13.8%
MSC	1,413	10.4%	1,472	4.2%	1,519	3.2%	1,570	3.4%	1,640	4.5%	16.1%
NEOAMC	1,580	-0.4%	1,612	2.0%	1,701	5.5%	1,670	-1.8%	1,632	-2.3%	3.3%
NOC	2,264	12.0%	2,426	7.2%	2,765	14.0%	3,145	13.7%	3,502	11.4%	54.7%
TCC	9,975	6.6%	10,531	5.6%	10,653	1.2%	10,887	2.2%	10,587	-2.8%	6.1%
OSU-OKC	2,814	14.5%	3,225	14.6%	3,594	11.4%	3,639	1.3%	3,624	-0.4%	28.8%
OSUTB-OKM	2,409	1.3%	2,506	4.0%	2,525	0.8%	2,575	2.0%	2,594	0.7%	7.7%
WOSC	1,324	0.6%	1,349	1.9%	1,402	3.9%	1,381	-1.5%	1,319	-4.5%	-0.4%
RCC	1,340	4.0%	1,427	6.5%	1,458	2.2%	1,462	0.3%	1,427	-2.4%	6.5%
CASC	1,566	16.4%	1,683	7.5%	1,789	6.3%	1,969	10.1%	1,867	-5.2%	19.2%
SSC	1,327	6.4%	1,455	9.6%	1,583	8.8%	1,583	0.0%	1,515	-4.3%	14.2%
RSC	4,427	6.8%	4,781	8.0%	5,318	11.2%	4,920	-7.5%	4,933	0.3%	11.4%
OCCC	6,878	18.0%	7,318	6.4%	7,873	7.6%	8,246	4.7%	8,047	-2.4%	17.0%
TOTAL COMMUNITY	40,210	8.4%	42,951	6.8%	45,326	5.5%	46,201	1.9%	45,539	-1.4%	13.3%
TOTAL PUBLIC	128,528	6.1%	136,067	5.9%	139,256	2.3%	142,332	2.2%	141,039	-0.9%	9.7%
TU	3,583	12.7%	3,615	0.9%	3,658	1.2%	3,736	2.1%	3,619	-3.1%	1.0%
SNU	2,180	-11.2%	1,883	-13.6%	2,207	17.2%	2,207	0.0%	2,214	0.3%	1.6%
OCU	2,952	-16.7%	2,927	-0.8%	3,368	15.1%	3,365	-0.1%	3,471	3.2%	17.6%
OBU	1,534	-1.7%	1,542	0.5%	1,566	1.6%	**	**	**	**	NA
OC	1,481	-4.8%	1,545	4.3%	1,516	-1.9%	1,751	15.5%	1,859	6.2%	25.5%
ORU	3,655	-9.9%	4,231	15.8%	4,131	-2.4%	3,886	-5.9%	3,702	-4.7%	1.3%
MACU	530	-14.8%	624	17.7%	649	4.0%	608	-6.3%	618	1.6%	16.6%
BC	**	**	**	**	**	**	**	**	734	**	NA
OWU	737	-3.5%	674	-8.5%	867	28.6%	969	11.8%	883	-8.9%	19.8%
HFWBC	242	9.0%	224	-7.4%	214	-4.5%	213	-0.5%	202	-5.2%	-16.5%
SWCU	150	**	188	25.3%	167	-11.2%	**	**	221	**	NA
St G	704	-1.9%	678	-3.7%	660	-2.7%	686	3.9%	749	9.2%	6.4%
TOTAL PRIVATE	17,748	-5.0%	18,131	2.2%	18,999	4.8%	17,420	-8.3%	18,268	4.9%	2.9%
GRAND TOTAL	146,276	4.6%	154,197	5.4%	158,256	2.6%	159,751	0.9%	159,307	-0.3%	8.9%

SOURCE: UDSENR11, 1/22/07.

** No report.

¹ Full-time equivalent (FTE): An annual FTE is calculated for an undergraduate by dividing the total number of credit hours enrolled by all undergraduate students by 30. The graduate and professional FTE is calculated by dividing the total number of credit hours enrolled by all graduate and professional students by 24. Totals may not equal sums of columns due to rounding of calculations.

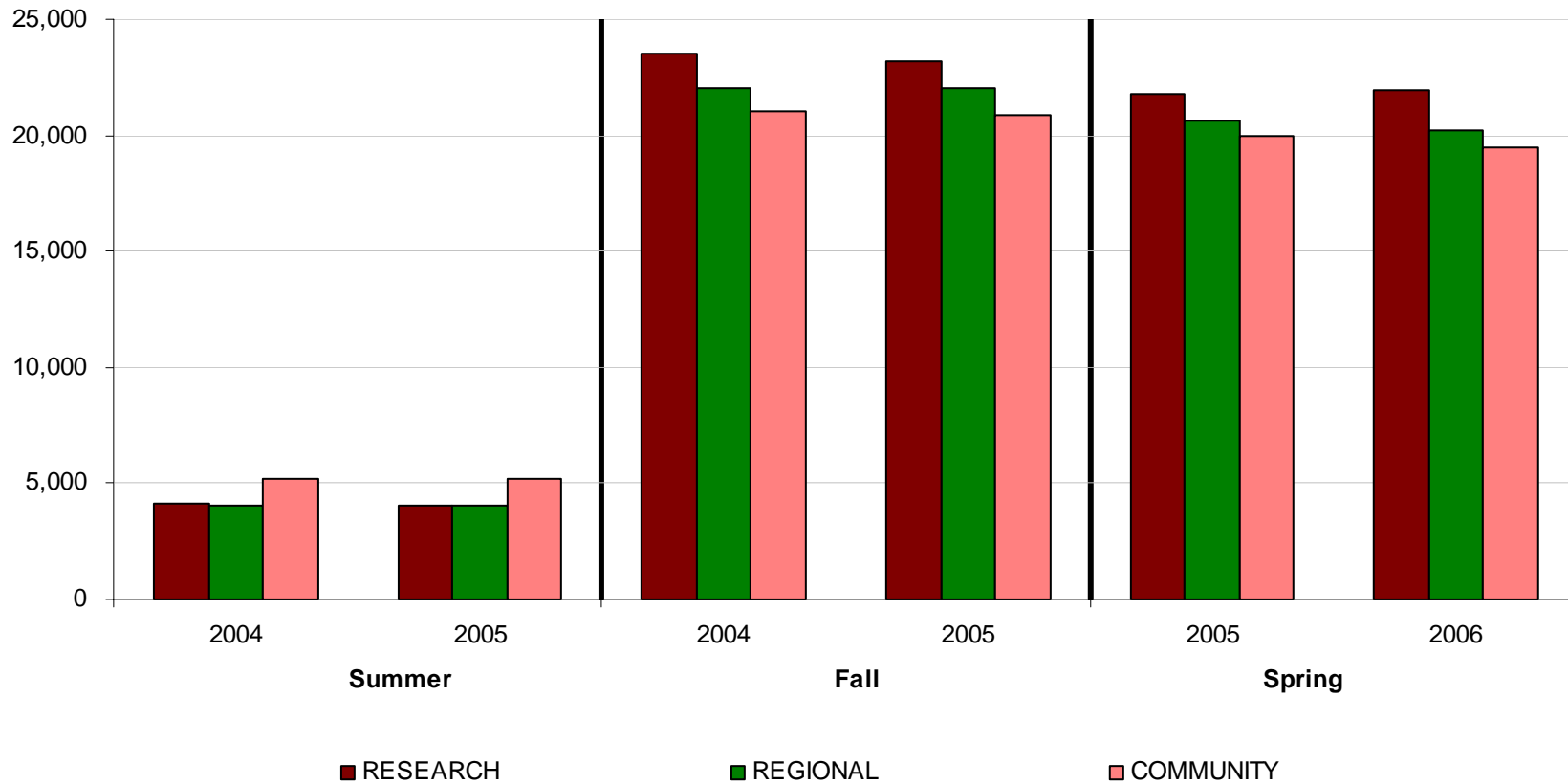
² Did not report for 2001-02, data are from 2000-01. ³ RSU began offering bachelor's degrees in fall 2000.

Annualized FTE at Public Institutions 2005-06 Compared to 2004-05

This table compares the annualized FTE enrollments in the public institutions in 2005-06 with the FTE enrollments in 2004-05 by semester and for the academic year.

- The public FTE for each semester during 2005-06 decreased from 2004-05 levels. Public FTE decreased 1,294 (0.09 percent) for the full-year 2005-06.

ANNUALIZED FTE BY SEMESTER AT PUBLIC INSTITUTIONS
ONE YEAR COMPARISON BY SEMESTER



**ANNUALIZED FULL-TIME EQUIVALENT (FTE)¹ ENROLLMENTS BY SEMESTER AT PUBLIC INSTITUTIONS
2004-05 COMPARED TO 2005-06**

Institution	Summer			Fall			Spring			Year		
	2004	2005	Diff.	2004	2005	Diff.	2005	2006	Diff.	2004-05	2005-06	Diff.
OU	1,786	1,767	-19	11,166	10,881	-285	10,490	10,167	-323	23,441	22,816	-625
OU-HSC	411	447	36	1,741	1,847	106	2,027	2,112	85	4,176	4,405	229
OSU	1,408	1,445	37	9,978	10,014	36	9,281	9,295	14	20,666	20,753	87
OSU-CHS	544	388	-156	618	445	-173	0	365	365	1,161	1,197	36
TOTAL RESEARCH	4,149	4,047	-102	23,503	23,187	-316	21,798	21,939	141	49,444	49,171	-273
UCO	931	960	29	5,850	6,025	175	5,484	5,454	-30	12,264	12,440	176
ECU	429	436	7	1,817	1,801	-16	1,769	1,701	-68	4,015	3,937	-78
NSU	639	649	10	3,822	3,783	-39	3,536	3,456	-80	7,997	7,886	-111
NWOSU	154	166	12	888	851	-37	826	814	-12	1,870	1,830	-40
SEOSU	338	339	1	1,621	1,624	3	1,507	1,442	-65	3,466	3,406	-60
SWOSU	363	374	11	2,330	2,232	-98	2,186	2,096	-90	4,878	4,702	-176
CU	529	464	-65	2,094	2,075	-19	1,963	1,946	-17	4,586	4,486	-100
LU	215	197	-18	1,237	1,292	55	1,185	1,154	-31	2,637	2,642	5
USAO	167	193	26	531	542	11	461	482	21	1,159	1,217	58
OPSU	55	58	3	564	512	-52	502	462	-40	1,121	1,031	-90
RSU	236	239	3	1,273	1,319	46	1,188	1,194	6	2,696	2,753	57
TOTAL REGIONAL	4,056	4,075	19	22,027	22,056	29	20,607	20,201	-406	46,689	46,330	-359
CSC	143	134	-9	808	779	-29	726	669	-57	1,677	1,582	-95
EOSC	90	79	-11	718	624	-94	670	567	-103	1,477	1,270	-207
MSC	123	141	18	716	774	58	730	725	-5	1,570	1,640	70
NEOAMC	107	110	3	827	811	-16	737	711	-26	1,670	1,632	-38
NOC	218	222	4	1,514	1,676	162	1,413	1,604	191	3,145	3,502	357
TCC	1,477	1,487	10	4,778	4,700	-78	4,632	4,400	-232	10,887	10,587	-300
OSU-OKC	399	421	22	1,661	1,649	-12	1,579	1,555	-24	3,639	3,624	-15
OSUTB-OKM	591	639	48	1,039	1,015	-24	945	940	-5	2,575	2,594	19
WOSC	148	116	-32	591	615	24	642	588	-54	1,381	1,319	-62
RCC	142	130	-12	662	670	8	657	627	-30	1,462	1,427	-35
CASC	152	159	7	942	892	-50	874	816	-58	1,969	1,867	-102
SSC	122	125	3	744	718	-26	717	672	-45	1,583	1,515	-68
RSC	550	550	0	2,281	2,275	-6	2,089	2,109	20	4,920	4,933	13
OCCC	946	906	-40	3,737	3,686	-51	3,563	3,455	-108	8,246	8,047	-199
TOTAL COMMUNITY	5,208	5,219	11	21,018	20,884	-134	19,974	19,438	-536	46,201	45,539	-662
TOTAL PUBLIC	13,411	13,336	-75	66,545	66,123	-421	62,374	61,581	-801	142,332	141,039	-1,294

SOURCE: UDSENR11, 2004-05 (2/14/06), 2005-06 (1/22/07)

NOTE: May contain concurrent high school enrollments.

¹ Full-time equivalent (FTE): An annual FTE is calculated for an undergraduate by dividing the total number of credit hours enrolled by all undergraduate students by 30.

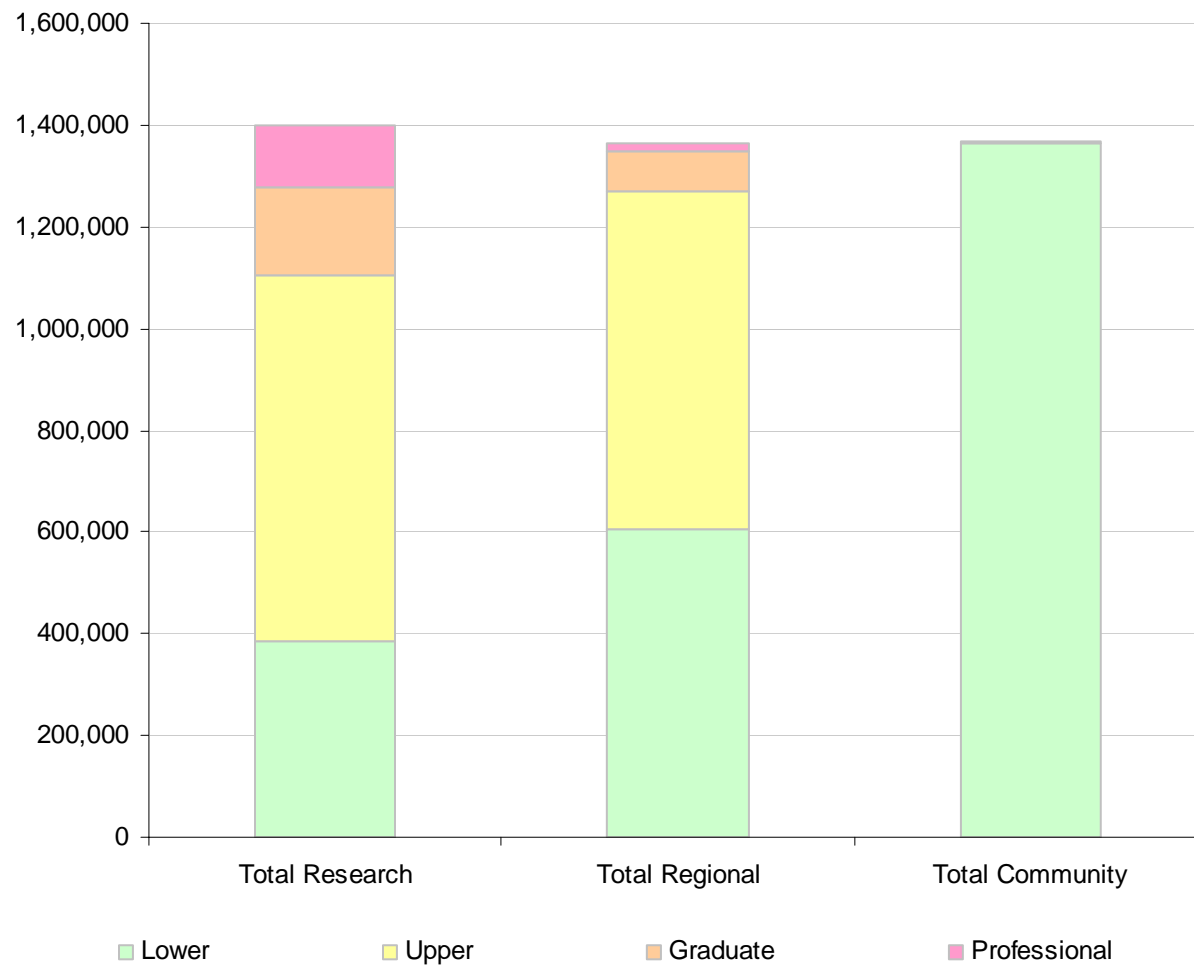
The graduate and professional FTE is calculated by dividing the total number of credit hours enrolled by all graduate and professional students by 24. Totals may not equal sums of columns due to rounding of calculations.

Annual Student Credit Hours by Division

The following graph and table describe annual student credit hours by the division in which the student is classified. For example, the lower division number reflects the number of credit hours in which freshman and sophomore students enrolled.

- Of the 4,132,776 total student credit hours produced in 2005-06 at public institutions, 2,353,493 (56.9 percent) were taken by lower division students, 1,385,709 (33.5 percent) were taken by upper division students, 254,777 (6.2 percent) were taken by graduate students, and 138,797 (3.4 percent) were taken by professional students.

ANNUAL STUDENT CREDIT HOURS AT PUBLIC INSTITUTIONS 2005-06



COMPARISON OF ANNUAL STUDENT CREDIT HOURS BY DIVISION¹
2005-06

Institution	Lower	Upper	Graduate	Professional	All Students
OU	163,293	386,879	91,681	15,763	657,616
OU-HSC	0	27,219	17,237	66,715	111,171
OSU	222,003	304,517	64,931	11,925	603,376
OSU-CHS	0	0	259	28,469	28,728
TOTAL RESEARCH	385,296	718,615	174,108	122,872	1,400,891
UCO	128,933	213,766	24,386	0	367,085
ECU	41,757	60,130	12,982	0	114,869
NSU	86,652	125,042	15,666	4,252	231,612
NWOSU	21,699	28,141	4,062	0	53,902
SEOSU	43,067	51,738	5,885	0	100,690
SWOSU	68,821	48,869	7,687	11,026	136,403
Cameron	78,827	46,640	7,262	0	132,729
Langston	42,122	32,908	2,739	647	78,416
USAO	18,000	18,497	0	0	36,497
Panhandle	14,863	16,089	0	0	30,952
RSU	59,010	23,585	0	0	82,595
TOTAL REGIONAL	603,751	665,405	80,669	15,925	1,365,750
Connors	47,466	0	0	0	47,466
Eastern	38,094	0	0	0	38,094
Murray	49,203	0	0	0	49,203
NEOAMC	48,945	0	0	0	48,945
NOC	105,047	0	0	0	105,047
TCC	317,600	0	0	0	317,600
OSU-OKC	108,729	0	0	0	108,729
OSU-TB,OKM	76,140	1,689	0	0	77,829
Western	39,580	0	0	0	39,580
Redlands	42,795	0	0	0	42,795
CASC	56,006	0	0	0	56,006
Seminole	45,443	0	0	0	45,443
Rose	148,001	0	0	0	148,001
OCCC	241,397	0	0	0	241,397
TOTAL COMMUNITY	1,364,446	1,689	0	0	1,366,135
TOTAL PUBLIC	2,353,493	1,385,709	254,777	138,797	4,132,776
TU	31,398	52,494	6,132	13,584	103,608
SNU	17,211	35,239	11,162	0	63,612
OCU	28,468	25,958	21,084	18,666	94,176
OBU	**	**	**	**	**
OC	29,307	19,503	5,574	0	54,384
ORU	29,575	67,591	7,009	4,098	108,273
MACU	7,089	11,415	30	0	18,534
Bacone	12,618	9,383	0	**	22,001
OWU	11,334	14,146	784	0	26,264
Hillsdale	3,697	2,055	249	0	6,001
SWCU	2,678	3,948	0	0	6,626
St. Gregory's	12,293	10,059	88	0	22,440
TOTAL PRIVATE	185,668	251,791	52,112	36,348	525,919
GRAND TOTAL	2,539,161	1,637,500	306,889	175,145	4,658,695

SOURCE: UDSENR11, 1/22/07.

NOTE: May contain concurrent high school enrollments. ** Did not report.

¹ Division is the level at which the student is classified; may not be the level at which the credit hour was generated.

Source: Oklahoma State Regents for Higher Education, June 2007

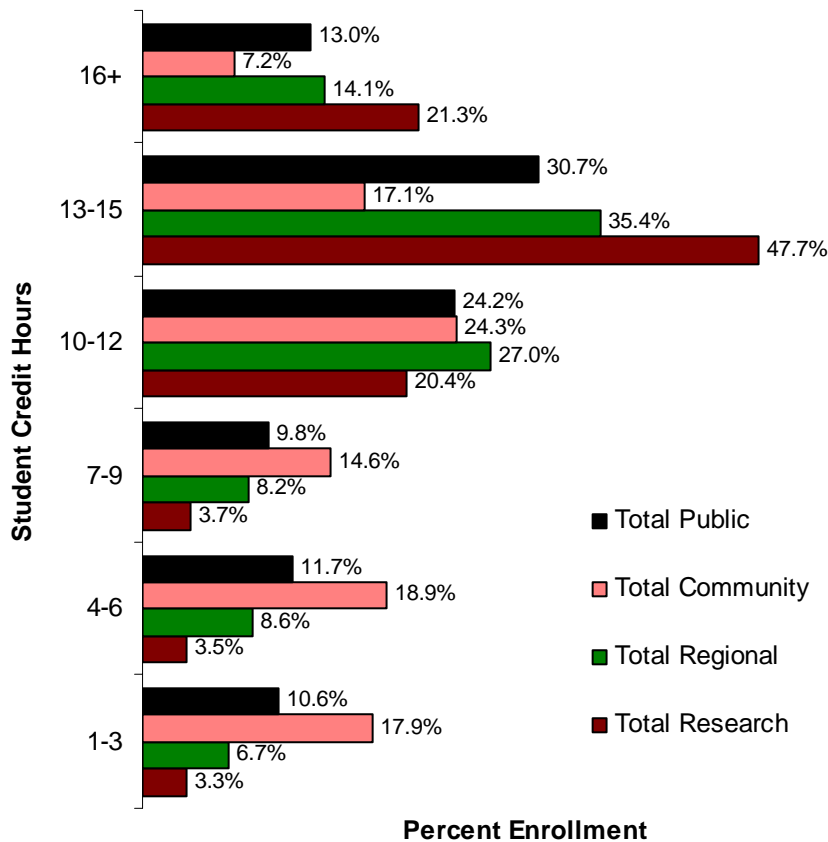
Unduplicated Fall Headcount Enrollment by Level, Division, and Credit Hours

The following graphs and tables describe the fall 2005 unduplicated headcount enrollment by undergraduate and graduate level and by credit hours. Undergraduate level is further disaggregated by lower and upper division.

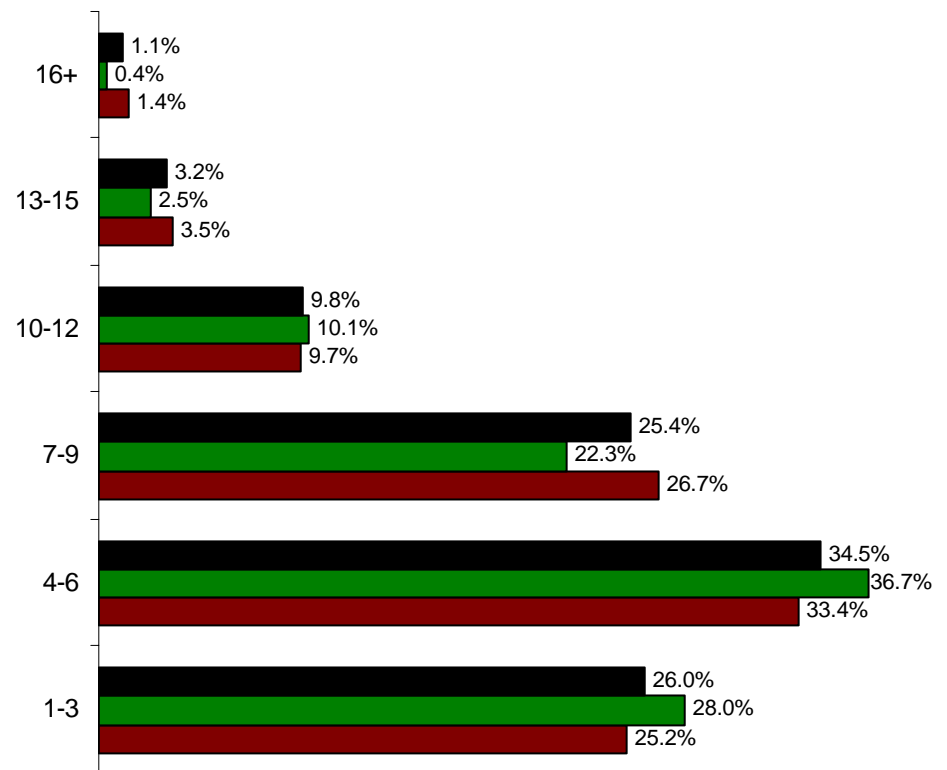
- The largest percentage of undergraduates at the public institutions (30.7 percent) enrolled in 13 to 15 credit hours in fall 2005: 47.7 percent of the research university students, 35.4 percent of the regional university students, and 17.1 percent of the community college students. The highest percentage (24.3 percent) of community college students enrolled in 10 to 12 credit hours.

At the graduate level, more students at the research universities (33.4 percent) and at the regional universities (36.7 percent) enrolled in 4 to 6 credit hours.

UNDERGRADUATE LEVEL



GRADUATE LEVEL



**PERCENT OF FALL UNDUPLICATED STUDENT HEADCOUNT ENROLLMENT BY LEVEL AND CREDIT HOURS
FALL 2005**

Institution	Undergraduate* Hours						Graduate* Hours					
	1-3	4-6	7-9	10-12	13-15	16+	1-3	4-6	7-9	10-12	13-15	16+
OU	3.1%	3.5%	3.8%	22.9%	46.6%	20.2%	26.3%	33.9%	26.9%	8.3%	3.7%	0.9%
OU-HSC	1.1%	3.8%	5.3%	10.5%	60.6%	18.7%	17.9%	30.5%	24.1%	11.5%	5.8%	10.3%
OSU	3.7%	3.5%	3.6%	18.3%	48.3%	22.7%	25.0%	33.4%	27.0%	11.3%	2.9%	0.4%
OSU-CHS	0.0%	0.0%	0.0%	0.0%	0.0%	0.0%	40.0%	26.7%	26.7%	0.0%	0.0%	6.7%
TOTAL RESEARCH	3.3%	3.5%	3.7%	20.4%	47.7%	21.3%	25.2%	33.4%	26.7%	9.7%	3.5%	1.4%
UCO	5.5%	8.8%	10.1%	31.0%	33.7%	10.9%	29.3%	32.5%	22.3%	12.8%	2.9%	0.3%
ECU	5.0%	4.4%	4.9%	26.4%	43.8%	15.5%	35.9%	36.6%	19.3%	5.8%	2.2%	0.1%
NSU	5.5%	8.4%	8.6%	26.8%	34.7%	16.1%	23.6%	44.8%	20.7%	10.1%	0.6%	0.2%
NWOSU	6.7%	6.8%	5.5%	20.8%	40.3%	20.0%	26.9%	34.5%	26.9%	7.1%	3.4%	1.3%
SEOSU	5.0%	5.3%	5.4%	25.8%	40.3%	18.2%	32.0%	36.6%	21.2%	8.5%	1.1%	0.6%
SWOSU	4.7%	3.9%	4.6%	23.5%	44.4%	19.0%	18.0%	42.6%	29.2%	8.0%	2.1%	0.0%
CU	10.5%	14.2%	10.0%	27.4%	28.2%	9.7%	32.0%	33.2%	20.0%	7.5%	5.4%	1.9%
LU	7.6%	6.5%	4.6%	27.5%	36.8%	17.0%	3.1%	25.2%	37.4%	27.5%	6.9%	0.0%
USAO	14.0%	5.2%	5.0%	25.3%	37.0%	13.6%	0.0%	0.0%	0.0%	0.0%	0.0%	0.0%
OPSU	8.1%	6.1%	3.8%	12.2%	31.0%	38.8%	0.0%	0.0%	0.0%	0.0%	0.0%	0.0%
RSU	9.7%	17.1%	14.4%	25.2%	28.2%	5.3%	0.0%	0.0%	0.0%	0.0%	0.0%	0.0%
TOTAL REGIONAL	6.7%	8.6%	8.2%	27.0%	35.4%	14.1%	28.0%	36.7%	22.3%	10.1%	2.5%	0.4%
CSC	13.5%	13.0%	9.9%	33.8%	16.7%	13.2%	0.0%	0.0%	0.0%	0.0%	0.0%	0.0%
EOSC	13.6%	12.0%	9.9%	18.5%	24.3%	21.8%	0.0%	0.0%	0.0%	0.0%	0.0%	0.0%
MSC	10.8%	17.0%	14.2%	23.7%	24.0%	10.3%	0.0%	0.0%	0.0%	0.0%	0.0%	0.0%
NEOAMC	13.1%	7.6%	6.8%	13.6%	29.8%	29.2%	0.0%	0.0%	0.0%	0.0%	0.0%	0.0%
NOC	14.8%	11.7%	11.8%	19.1%	30.1%	12.5%	0.0%	0.0%	0.0%	0.0%	0.0%	0.0%
TCC	21.3%	21.7%	16.0%	24.3%	13.1%	3.5%	0.0%	0.0%	0.0%	0.0%	0.0%	0.0%
OSU-OKC	13.0%	25.0%	22.5%	25.8%	11.3%	2.4%	0.0%	0.0%	0.0%	0.0%	0.0%	0.0%
OSUTB-OKM	11.1%	11.1%	6.6%	26.0%	32.1%	13.2%	0.0%	0.0%	0.0%	0.0%	0.0%	0.0%
WOSC	25.5%	14.4%	14.2%	20.7%	14.4%	10.9%	0.0%	0.0%	0.0%	0.0%	0.0%	0.0%
RCC	20.0%	21.9%	10.8%	23.9%	15.8%	7.6%	0.0%	0.0%	0.0%	0.0%	0.0%	0.0%
CASC	12.8%	12.8%	10.8%	21.4%	27.0%	15.2%	0.0%	0.0%	0.0%	0.0%	0.0%	0.0%
SSC	16.7%	12.6%	10.0%	24.3%	23.6%	12.9%	0.0%	0.0%	0.0%	0.0%	0.0%	0.0%
RSC	22.3%	21.0%	14.5%	25.6%	13.2%	3.4%	0.0%	0.0%	0.0%	0.0%	0.0%	0.0%
OCCC	18.3%	21.8%	17.2%	26.6%	13.2%	3.0%	0.0%	0.0%	0.0%	0.0%	0.0%	0.0%
TOTAL COMMUNITY	17.9%	18.9%	14.6%	24.3%	17.1%	7.2%	0.0%	0.0%	0.0%	0.0%	0.0%	0.0%
TOTAL PUBLIC	10.6%	11.7%	9.8%	24.2%	30.7%	13.0%	26.0%	34.5%	25.4%	9.8%	3.2%	1.1%
TU	3.5%	3.3%	6.4%	22.5%	42.0%	22.2%	27.0%	17.7%	48.0%	5.6%	0.9%	0.7%
SNU	2.9%	2.8%	2.0%	30.7%	33.1%	28.4%	4.2%	4.4%	44.7%	43.3%	0.5%	2.9%
OCU	3.0%	5.0%	6.1%	14.2%	35.3%	36.5%	12.4%	20.8%	41.6%	16.0%	5.9%	3.2%
OBU	**	**	**	**	**	**	**	**	**	**	**	**
OC	2.1%	1.3%	2.8%	18.7%	45.0%	30.1%	0.0%	0.0%	0.0%	0.0%	0.0%	0.0%
ORU	11.3%	5.8%	9.9%	4.1%	23.4%	45.5%	39.2%	27.6%	14.1%	9.6%	5.5%	4.1%
MACU	7.2%	8.3%	9.9%	31.5%	32.3%	10.8%	0.0%	0.0%	0.0%	0.0%	0.0%	0.0%
BC	1.6%	8.4%	9.3%	17.6%	31.4%	31.6%	0.0%	0.0%	0.0%	0.0%	0.0%	0.0%
OWU	6.8%	7.1%	22.8%	18.3%	27.4%	17.6%	0.0%	0.0%	0.0%	0.0%	0.0%	0.0%
HFWBC	15.4%	10.0%	5.8%	12.7%	28.1%	28.1%	0.0%	0.0%	0.0%	0.0%	0.0%	0.0%
SWCU	5.7%	5.4%	27.5%	30.5%	22.8%	8.1%	0.0%	0.0%	0.0%	0.0%	0.0%	0.0%
St. G	13.4%	14.1%	13.7%	9.9%	17.3%	31.7%	0.0%	0.0%	0.0%	0.0%	0.0%	0.0%
TOTAL PRIVATE	5.9%	5.2%	8.4%	17.3%	32.8%	30.4%	18.5%	20.5%	35.7%	19.1%	3.6%	2.6%
GRAND TOTAL	10.2%	11.1%	9.7%	23.6%	30.9%	14.6%	24.9%	32.4%	26.9%	11.1%	3.3%	1.3%

SOURCE: UDSENR11, 01/22/07

NOTE: May contain unclassified students and concurrent high school enrollment. Percentages equal 100 percent within each level. **Did not report.

Source: Oklahoma State Regents for Higher Education, June 2007

Intentionally Blank

**PERCENTAGE OF FALL UNDERGRADUATE UNDUPLICATED STUDENT HEADCOUNT ENROLLMENT
BY DIVISION AND CREDIT HOURS
FALL 2005**

Institution	Lower Division*						Upper Division*					
	Hours						Hours					
	1-3	4-6	7-9	10-12	13-15	16+	1-3	4-6	7-9	10-12	13-15	16+
OU	1.3%	1.4%	1.5%	14.2%	60.3%	21.2%	4.1%	4.5%	5.0%	27.2%	39.6%	19.6%
OU-HSC	0.0%	0.0%	0.0%	0.0%	0.0%	0.0%	1.1%	3.8%	5.3%	10.5%	60.6%	18.7%
OSU	2.2%	1.4%	1.3%	12.2%	58.7%	24.3%	4.8%	5.1%	5.4%	23.2%	40.0%	21.4%
OSU-CHS	0.0%	0.0%	0.0%	0.0%	0.0%	0.0%	0.0%	0.0%	0.0%	0.0%	0.0%	0.0%
TOTAL RESEARCH	1.8%	1.4%	1.4%	13.1%	59.4%	22.9%	4.3%	4.7%	5.2%	24.9%	40.6%	20.4%
UCO	5.6%	6.6%	8.9%	30.9%	38.1%	9.8%	5.4%	10.3%	10.9%	31.1%	30.6%	11.7%
ECU	3.2%	3.5%	3.6%	19.7%	52.9%	17.1%	6.5%	5.1%	6.0%	31.9%	36.3%	14.2%
NSU	3.0%	4.6%	4.9%	21.4%	47.2%	19.0%	7.3%	11.2%	11.3%	30.8%	25.4%	14.0%
NWOSU	8.2%	5.7%	2.8%	14.5%	47.6%	21.2%	5.4%	7.7%	7.9%	26.4%	33.8%	18.9%
SEOSU	4.5%	4.1%	2.9%	24.0%	47.3%	17.0%	5.4%	6.4%	7.8%	27.5%	33.7%	19.3%
SWOSU	6.1%	3.7%	4.3%	22.4%	46.0%	17.4%	2.3%	4.1%	5.1%	25.3%	41.5%	21.7%
CU	11.1%	14.8%	9.7%	27.5%	29.1%	7.8%	9.4%	13.1%	10.5%	27.2%	26.2%	13.6%
LU	2.4%	2.7%	1.2%	31.9%	45.7%	16.2%	14.3%	11.5%	9.0%	21.8%	25.4%	17.9%
USAO	2.1%	4.6%	5.1%	29.2%	43.8%	15.2%	25.8%	5.7%	4.9%	21.5%	30.2%	11.9%
OPSU	7.8%	5.6%	2.8%	10.4%	35.4%	38.0%	8.5%	6.7%	4.8%	14.1%	26.2%	39.7%
RSU	7.8%	5.6%	2.8%	10.4%	35.4%	38.0%	12.7%	21.8%	18.7%	26.9%	16.3%	3.7%
TOTAL REGIONAL	6.0%	7.3%	6.7%	25.3%	40.9%	13.8%	7.4%	9.8%	9.8%	28.7%	29.8%	14.5%
CSC	13.5%	13.0%	9.9%	33.8%	16.7%	13.2%	0.0%	0.0%	0.0%	0.0%	0.0%	0.0%
EOSC	13.6%	12.0%	9.9%	18.5%	24.3%	21.8%	0.0%	0.0%	0.0%	0.0%	0.0%	0.0%
MSC	10.8%	17.0%	14.2%	23.7%	24.0%	10.3%	0.0%	0.0%	0.0%	0.0%	0.0%	0.0%
NEOAMC	13.1%	7.6%	6.8%	13.6%	29.8%	29.2%	0.0%	0.0%	0.0%	0.0%	0.0%	0.0%
NOC	14.8%	11.7%	11.8%	19.1%	30.1%	12.5%	0.0%	0.0%	0.0%	0.0%	0.0%	0.0%
TCC	21.3%	21.7%	16.0%	24.3%	13.1%	3.5%	0.0%	0.0%	0.0%	0.0%	0.0%	0.0%
OSU-OKC	13.0%	25.0%	22.5%	25.8%	11.3%	2.4%	0.0%	0.0%	0.0%	0.0%	0.0%	0.0%
OSUTB-OKM	10.9%	11.0%	6.5%	26.0%	32.3%	13.3%	0.0%	0.0%	0.0%	0.0%	0.0%	0.0%
WOSC	25.5%	14.4%	14.2%	20.7%	14.4%	10.9%	0.0%	0.0%	0.0%	0.0%	0.0%	0.0%
RCC	20.0%	21.9%	10.8%	23.9%	15.8%	7.6%	0.0%	0.0%	0.0%	0.0%	0.0%	0.0%
CASC	12.8%	12.8%	10.8%	21.4%	27.0%	15.2%	0.0%	0.0%	0.0%	0.0%	0.0%	0.0%
SSC	16.7%	12.6%	10.0%	24.3%	23.6%	12.9%	0.0%	0.0%	0.0%	0.0%	0.0%	0.0%
RSC	22.3%	21.0%	14.5%	25.6%	13.2%	3.4%	0.0%	0.0%	0.0%	0.0%	0.0%	0.0%
OCCC	18.3%	21.8%	17.2%	26.6%	13.2%	3.0%	0.0%	0.0%	0.0%	0.0%	0.0%	0.0%
TOTAL COMMUNITY	17.9%	18.9%	14.6%	24.3%	17.1%	7.2%	0.0%	0.0%	0.0%	0.0%	0.0%	0.0%
TOTAL PUBLIC	12.8%	13.7%	10.9%	23.0%	28.7%	10.9%	5.8%	7.3%	7.5%	26.8%	35.1%	17.4%
TU	1.2%	0.8%	2.9%	20.1%	50.6%	24.3%	5.3%	5.1%	9.1%	24.4%	35.6%	20.6%
SNU	2.8%	3.1%	0.9%	6.8%	51.2%	35.3%	3.0%	2.6%	2.7%	44.8%	22.5%	24.3%
OCU	2.8%	2.1%	6.5%	13.5%	35.9%	39.2%	3.2%	8.7%	5.5%	15.1%	34.4%	33.0%
OBU	**	**	**	**	**	**	**	**	**	**	**	**
OC	2.1%	0.9%	2.0%	16.4%	47.4%	31.2%	0.0%	0.0%	0.0%	0.0%	0.0%	0.0%
ORU	1.7%	5.0%	1.6%	4.1%	33.9%	53.7%	16.2%	6.1%	14.2%	4.1%	18.1%	41.3%
MACU	3.9%	5.8%	5.8%	37.0%	37.3%	10.3%	9.6%	10.0%	12.9%	27.6%	28.7%	11.2%
BC	1.5%	6.9%	5.7%	12.8%	34.9%	38.1%	1.9%	10.6%	14.7%	24.7%	26.3%	21.9%
OWU	6.1%	5.0%	18.9%	11.8%	37.5%	20.6%	7.4%	8.8%	25.9%	23.4%	19.4%	15.1%
HFWBC	14.2%	10.2%	4.5%	8.5%	30.7%	31.8%	17.9%	9.5%	8.3%	21.4%	22.6%	20.2%
SWCU	5.9%	2.5%	4.2%	30.3%	44.5%	12.6%	5.6%	7.3%	43.0%	30.7%	8.4%	5.0%
St G	13.5%	15.3%	18.9%	10.3%	15.5%	26.5%	13.1%	12.2%	5.8%	9.3%	20.1%	39.5%
TOTAL PRIVATE	3.5%	4.0%	5.4%	13.9%	40.0%	33.3%	8.1%	6.2%	11.0%	20.3%	26.5%	27.9%
TOTAL OKLAHOMA	12.2%	13.1%	10.5%	22.4%	29.4%	12.4%	6.2%	7.1%	8.0%	25.9%	33.9%	18.9%

SOURCE: UDSEN11, 01/22/07.

NOTE: May contain unclassified students and concurrent high school enrollments.

* Percentages equal 100 percent within each division.

**Did not report.

Source: Oklahoma State Regents for Higher Education, June 2007

Annual Unduplicated Enrollment by Field of Study and Class Level

The following tables describe the number of unduplicated headcount enrollments in higher education institutions in 2005-06 by field of study and by class level.

- At the public institutions, Education was the most popular field of study in 2005-06 with 24,369 (10.3 percent) students enrolled. Business Management was second with 22,021 (9.3 percent) students enrolled. It was the same in 2004-05. In 2003-04 and 2002-03, Business Management was first and Education was second. These have been the top two fields since the first Student Data Report was published in 1982-83.
- At the private institutions, Business Management was the most popular field of study in 2005-06 with 4,894 (20.3 percent) students enrolled. Education was second with 1,770 (7.4 percent) students enrolled. It was the same in 2004-05, 2003-04 and 2002-03, and these have been the top two fields since the first Student Data Report was published in 1982-83.

**ANNUAL UNDUPLICATED STUDENT HEADCOUNT ENROLLMENTS
BY FIELD OF STUDY AND CLASS LEVEL IN PUBLIC INSTITUTIONS
2005-06**

Field of Study	Freshman	Sophomore	Junior	Senior	Graduate	Unclassified	Professional	Total
Agriculture	582	571	524	803	239	1	0	2,720
Architecture	113	153	155	526	107	0	0	1,054
Area Studies	48	69	116	223	17	0	0	473
Biological Sciences	2,917	2,613	1,388	2,489	577	91	0	10,075
Business Management	5,602	5,865	2,789	5,887	1,789	89	0	22,021
Communications	858	1,291	1,132	2,193	322	4	0	5,800
Computer Science	621	504	350	876	266	2	0	2,619
Education	5,339	5,135	3,130	5,836	4,520	409	0	24,369
Engineering	1,460	1,803	1,234	2,857	1,636	2	0	8,992
Fine & Applied Arts	1,172	1,174	727	1,522	326	26	0	4,947
Foreign Languages	108	180	98	217	37	2	0	642
Health Professions	1,082	1,319	1,213	1,864	829	41	2,655	9,003
Home Economics	656	559	598	935	351	16	0	3,115
Law	8	5	0	0	0	0	533	546
Letters	746	775	573	1,173	444	22	260	3,993
Library Science	0	0	0	0	257	0	0	257
Mathematics	200	211	117	283	199	5	0	1,015
Physical Sciences	1,440	1,071	307	702	629	4	0	4,153
Psychology	1,356	1,199	912	1,585	496	11	0	5,559
Public Affairs	553	585	542	1,056	1,009	16	0	3,761
Social Sciences	2,185	2,344	1,665	3,659	992	26	0	10,871
Arts & Sciences Gen.	33,431	15,727	3,839	5,342	4,325	14,997	1	77,662
Business Tech.	2,993	2,579	1	2	0	14	0	5,589
Computer Tech.	968	991	0	0	0	9	0	1,968
Health Serv. Tech.	6,700	6,697	135	218	0	218	0	13,968
Engineering Tech.	3,045	2,228	14	21	0	16	0	5,324
Natural Sci. Tech.	730	722	1	0	0	2	0	1,455
Public Serv. Tech.	2,073	1,658	10	0	0	14	0	3,755
TOTALS	76,986	58,028	21,570	40,269	19,367	16,037	3,449	235,706

SOURCE: UDSEN18, 1/22/07.

NOTE: Unduplicated within the institution between semesters.

ANNUAL UNDUPLICATED STUDENT HEADCOUNT ENROLLMENTS
BY FIELD OF STUDY AND CLASS LEVEL IN PRIVATE INSTITUTIONS
2005-06

Field of Study	Freshman	Sophomore	Junior	Senior	Graduate	Unclassified	Professional	Total
Agriculture	0	3	1	4	0	0	0	8
Architecture	0	0	0	0	0	0	0	0
Area Studies	0	0	0	0	0	0	0	0
Biological Sciences	121	142	98	158	12	11	0	542
Business Management	503	599	720	1,696	1,259	117	0	4,894
Communications	91	129	167	304	26	3	0	720
Computer Science	36	46	62	108	110	26	0	388
Education	300	329	339	612	160	30	0	1,770
Engineering	91	135	115	239	127	81	0	788
Fine & Applied Arts	254	215	179	332	58	58	0	1,096
Foreign Languages	6	17	12	37	0	0	0	72
Health Professions	55	80	226	646	54	35	0	1,096
Home Economics	42	37	27	120	11	0	0	237
Law	8	19	20	29	0	80	1,255	1,411
Letters	66	73	97	155	152	12	0	555
Mathematics	12	19	18	30	2	5	0	86
Physical Sciences	28	32	25	26	167	2	0	280
Psychology	60	97	130	228	185	13	0	713
Public Affairs	9	14	18	52	28	0	0	121
Social Sciences	71	107	139	259	14	11	0	601
Theology	185	247	195	329	214	3	200	1,373
Arts & Sciences Gen.	1,697	1,040	621	1,095	856	1,257	8	6,574
Health Serv. Tech.	3	0	1	0	0	0	0	4
Public Serv. Tech.	33	103	89	160	204	141	1	731
TOTALS	3,671	3,483	3,299	6,619	3,639	1,885	1,464	24,060

SOURCE: UDSENR18, 1/22/07.

NOTE: Unduplicated within the institution between semesters.

ANNUAL UNDUPLICATED STUDENT HEADCOUNT ENROLLMENTS
BY FIELD OF STUDY AND CLASS LEVEL IN PUBLIC AND PRIVATE INSTITUTIONS
2005-06

Field of Study	Freshman	Sophomore	Junior	Senior	Graduate	Unclassified	Professional	Total
Agriculture	582	574	525	807	239	1	0	2,728
Architecture	113	153	155	526	107	0	0	1,054
Area Studies	48	69	116	223	17	0	0	473
Biological Sciences	3,038	2,755	1,486	2,647	589	102	0	10,617
Business Management	6,105	6,464	3,509	7,583	3,048	206	0	26,915
Communications	949	1,420	1,299	2,497	348	7	0	6,520
Computer Science	657	550	412	984	376	28	0	3,007
Education	5,639	5,464	3,469	6,448	4,680	439	0	26,139
Engineering	1,551	1,938	1,349	3,096	1,763	83	0	9,780
Fine & Applied Arts	1,426	1,389	906	1,854	384	84	0	6,043
Foreign Languages	114	197	110	254	37	2	0	714
Health Professions	1,137	1,399	1,439	2,510	883	76	2,655	10,099
Home Economics	698	596	625	1,055	362	16	0	3,352
Law	16	24	20	29	0	80	1,788	1,957
Letters	812	848	670	1,328	596	34	260	4,548
Library Science	0	0	0	0	257	0	0	257
Mathematics	212	230	135	313	201	10	0	1,101
Physical Sciences	1,468	1,103	332	728	796	6	0	4,433
Psychology	1,416	1,296	1,042	1,813	681	24	0	6,272
Public Affairs	562	599	560	1,108	1,037	16	0	3,882
Social Sciences	2,256	2,451	1,804	3,918	1,006	37	0	11,472
Theology	185	247	195	329	214	3	200	1,373
Arts & Sciences Gen.	35,128	16,767	4,460	6,437	5,181	16,254	9	84,236
Business Tech.	2,993	2,579	1	2	0	14	0	5,589
Computer Tech.	968	991	0	0	0	9	0	1,968
Health Serv. Tech.	6,703	6,697	136	218	0	218	0	13,972
Engineering Tech.	3,045	2,228	14	21	0	16	0	5,324
Natural Sci. Tech.	730	722	1	0	0	2	0	1,455
Public Serv. Tech.	2,106	1,761	99	160	204	155	1	4,486
TOTALS	80,657	61,511	24,869	46,888	23,006	17,922	4,913	259,766

SOURCE: UDSENR18, 1/22/07.

NOTE: Unduplicated within the institution between semesters.

Unduplicated Headcount Enrollments at Public Institutions 2005-06 Compared to 2004-05

This table compares 2005-06 and 2004-05 unduplicated headcount enrollments at the public institutions by semester.

- In 2005-06, the summer semester experienced an increase from the previous year, while the fall and spring semesters had a decrease resulting in a State System decrease of 2,515 students (1.1 percent) for the year. Over the past five years, public enrollment has increased 10.2 percent.
- Three public institutions with the largest increases were the Northern Oklahoma College (613 students, 10.2 percent), the University of Central Oklahoma (247, 1.3 percent), and the University of Oklahoma Health Sciences Center (216 students, 6.0 percent).
- The University of Oklahoma had the largest decrease in enrollment, with 1,403 fewer students than the previous year.
- From 2004-05 to 2005-06, research universities' enrollment decreased by a total of 1,404 students (2.2 percent); regional universities' enrollment decreased by a total of 96 students (0.1 of a percent); and community colleges decreased by a total of 1,015 (0.1 of a percent).

**UNDUPLICATED HEADCOUNT ENROLLMENTS BY SEMESTER AT PUBLIC INSTITUTIONS
2004-05 COMPARED TO 2005-06**

Institution	Summer			Fall			Spring			Year		
	2004	2005	Difference	2004	2005	Difference	2005	2006	Difference	2004-05	2005-06	Difference
OU	10,388	10,334	-54	27,483	26,506	-977	26,047	25,102	-945	32,965	31,562	-1,403
OU-HSC	1,675	1,799	124	3,317	3,520	203	3,205	3,364	159	3,588	3,804	216
OSU	8,241	8,489	248	23,819	23,692	-127	22,104	22,085	-19	27,395	27,291	-104
OSU-CHS	287	204	-83	407	273	-134	0	175	175	409	296	-113
TOTAL RESEARCH	20,591	20,826	235	55,026	53,991	-1,035	51,356	50,726	-630	64,357	62,953	-1,404
UCO	5,425	5,629	204	15,475	15,860	385	14,497	14,492	-5	18,920	19,167	247
ECU	2,281	2,325	44	4,654	4,628	-26	4,539	4,316	-223	6,112	6,040	-72
NSU	3,360	3,378	18	9,455	9,574	119	8,872	8,854	-18	11,361	11,434	73
NWOSU	857	913	56	2,169	2,102	-67	2,075	2,066	-9	2,703	2,756	53
SEOSU	1,776	1,801	25	3,983	3,951	-32	3,695	3,597	-98	4,977	4,979	2
SWOSU	1,879	1,856	-23	5,393	5,136	-257	4,977	4,913	-64	6,473	6,286	-187
CU	2,930	2,626	-304	5,933	5,880	-53	5,554	5,551	-3	8,171	7,853	-318
LU	1,148	1,043	-105	3,049	3,152	103	2,979	2,875	-104	3,922	3,946	24
USAO	650	781	131	1,422	1,431	9	1,244	1,289	45	1,671	1,714	43
OPSU	332	323	-9	1,234	1,144	-90	1,122	1,037	-85	1,508	1,356	-152
RSU	1,407	1,404	-3	3,754	3,880	126	3,548	3,641	93	5,041	5,232	191
TOTAL REGIONAL	22,045	22,079	34	56,521	56,738	217	53,102	52,631	-471	70,859	70,763	-96
CSC	880	821	-59	2,387	2,200	-187	2,045	1,967	-78	3,264	3,032	-232
EOSC	627	529	-98	2,074	1,682	-392	1,967	1,546	-421	2,893	2,302	-591
MSC	702	746	44	2,045	2,241	196	2,119	2,089	-30	2,939	3,035	96
NEOAMC	841	851	10	2,032	2,019	-13	1,872	1,757	-115	2,949	2,897	-52
NOC	1,350	1,396	46	4,377	4,784	407	4,029	4,588	559	6,013	6,626	613
TCC	9,758	9,744	-14	17,143	16,770	-373	16,917	16,144	-773	27,125	26,586	-539
OSU-OKC	2,640	2,758	118	5,771	5,785	14	5,590	5,516	-74	8,819	8,850	31
OSU-TB, OKM	1,439	1,620	181	2,677	2,705	28	2,421	2,427	6	3,852	3,932	80
WOSC	854	757	-97	1,919	2,060	141	1,998	1,917	-81	2,993	2,962	-31
RCC	825	900	75	2,168	2,214	46	2,177	2,066	-111	3,254	3,260	6
CASC	933	934	1	2,689	2,501	-188	2,467	2,303	-164	3,614	3,451	-163
SSC	666	674	8	2,181	2,107	-74	2,060	2,021	-39	3,061	3,005	-56
RSC	3,627	3,583	-44	8,472	8,156	-316	7,505	7,604	99	12,521	12,366	-155
OCCC	6,014	5,743	-271	12,569	12,772	203	12,342	12,145	-197	19,732	19,710	-22
TOTAL COMMUNITY	31,156	31,056	-100	68,504	67,996	-508	65,509	64,090	-1,419	103,029	102,014	-1,015
TOTAL PUBLIC	73,792	73,961	169	180,051	178,725	-1,326	169,967	167,447	-2,520	238,245	235,730	-2,515

SOURCE: UDSEN14, 2004-05 (2/14/06), 2005-06 (1/19/07)

NOTE: May contain first-time unclassified students and concurrent high school enrollments.

Concurrent High School Enrollment at Public Institutions

This table contains data from public higher education institutions authorized to concurrently enroll high school students in higher education. These students also are included in the other enrollment tables.

- In 2005-06, 5,803 high school students were reported as concurrently enrolled in at least one college course. These students enrolled for a total of 39,758 credit hours or 1,325 FTEs.
- In 2004-05, 4,229 high school students were concurrently enrolled for a total of 29,156 credit hours or 972 FTEs.

**CONCURRENT HIGH SCHOOL ENROLLMENT AT PUBLIC INSTITUTIONS
HEADCOUNT, CREDIT HOURS, AND ANNUALIZED FTE*
2005-06**

Institution	Summer 2005			Fall 2005			Spring 2006			Full Year 2005-06***		
	N	Cr Hrs	FTE*	N	Cr Hrs	FTE*	N	Cr Hrs	FTE*	N	Cr Hrs	FTE*
OU	12	28	1	49	215	7	5	22	1	63	265	9
OSU	11	37	1	57	225	8	89	387	13	119	649	22
TOTAL RESEARCH	23	65	2	106	440	15	94	409	14	182	914	30
UCO	21	76	3	151	1,012	34	163	988	33	238	2,076	69
ECU	50	63	2	27	142	5	42	186	6	94	391	13
NSU	5	29	1	58	259	9	70	313	10	81	601	20
NWOSU	28	106	4	49	186	6	110	370	12	142	662	22
SEOSU	17	76	3	56	243	8	71	313	10	97	632	31
SWOSU	8	29	1	92	395	14	99	402	13	132	826	17
CU	9	33	1	176	787	26	95	424	14	221	1,244	41
LU	**	**	**	**	**	**	**	**	**	**	**	**
USAO	1	3	0	17	77	3	14	63	2	25	143	5
OPSU	3	9	0	64	271	9	59	223	7	74	503	17
RSU	14	45	2	164	645	22	218	849	28	264	1,539	51
TOTAL REGIONAL	156	469	16	854	4,017	134	941	4,131	138	1,368	8,617	287
CSC	24	108	4	89	369	12	120	509	17	159	986	33
EOSC	30	161	5	59	245	8	82	344	11	120	750	25
MSC	46	181	6	180	867	29	210	1,013	34	260	2,061	69
NEOAMC	16	42	1	107	458	15	57	250	8	179	750	25
NOC	19	91	3	273	1,388	46	340	2,373	79	405	3,852	128
TCC	116	436	15	616	2,878	96	722	3,366	112	939	6,680	223
OSU-OKC	86	381	13	233	1,394	46	273	1,631	54	403	3,406	114
OSUTB-OKM	7	33	1	55	312	10	56	310	10	68	655	22
WOSC	12	43	1	113	537	18	121	575	19	151	1,155	39
RCC	17	57	2	316	1,205	40	338	1,320	44	447	2,582	86
CASC	30	128	4	78	338	11	77	356	12	126	822	27
SSC	5	32	1	89	370	12	120	528	18	156	930	31
RSC	34	149	5	187	940	31	186	985	33	293	2,074	69
OCCC	129	583	19	286	1,484	49	285	1,457	49	547	3,524	117
TOTAL COMMUNITY	571	2,425	81	2,681	12,785	426	2,987	15,017	501	4,253	30,227	1,008
TOTAL PUBLIC	750	2,959	99	3,641	17,242	575	4,022	19,557	652	5,803	39,758	1,325

SOURCE: UDSENR11, 1/22/07

NOTE: FTE may not total due to rounding of calculated values. ** Did not report. *** Full-year is unduplicated between semesters.

* Full-time equivalent (FTE): An annual FTE is calculated for an undergraduate by dividing the total number of credit hours enrolled by all undergraduate students by 30.

The graduate and professional FTE is calculated by dividing the total number of credit hours enrolled by all graduate and professional students by 24.

Five-Year Comparison of Full-Time and Part-Time Enrollments

This table shows a five-year history of fall semester full-time and part-time enrollments at all public institutions. In the fall semester, an undergraduate student must be enrolled in at least 12 credit hours and a graduate student must be enrolled in at least 9 credit hours to be classified as full-time.

- Full-time enrollment at public institutions increased from 99,225 in fall 2001 to 110,822 in fall 2005, or 11.7 percent. Part-time enrollment increased from 61,956 in fall 2001 to 64,275 in fall 2005, or 3.7 percent.

HEADCOUNT ENROLLMENT AT PUBLIC INSTITUTIONS BY FULL-TIME AND PART-TIME STATUS FALL 2001 TO FALL 2005

Institution	Fall 2001		Fall 2002		Fall 2003		Fall 2004		Fall 2005	
	Full-Time	Part-Time	Full-Time	Part-Time	Full-Time	Part-Time	Full-Time	Part-Time	Full-Time	Part-Time
OU	18,709	6,343	19,878	6,332	20,506	6,593	20,749	6,678	20,018	6,439
OUHSC	2,000	829	2,083	868	2,227	876	2,449	868	2,623	897
OSU	17,303	4,694	18,403	4,744	18,577	5,199	18,556	5,189	18,564	5,071
OSU-CHS ¹	263	0	363	26	364	33	366	41	262	11
Research	38,275	11,866	40,727	11,970	41,674	12,701	42,120	12,776	41,467	12,418
UCO	9,246	5,284	9,787	5,341	9,429	4,791	10,237	5,111	10,566	5,143
ECU	3,108	1,053	3,231	1,108	3,282	1,138	3,353	1,263	3,314	1,287
NSU	6,075	2,437	6,626	2,303	6,830	2,395	6,903	2,513	6,737	2,778
NWOSU	1,452	567	1,460	545	1,527	563	1,622	512	1,551	502
SEOSU	2,948	906	2,989	901	3,113	938	3,079	840	3,075	820
SWOSU	4,038	806	4,162	892	4,394	781	4,451	873	4,229	815
CU	3,068	2,198	3,262	2,304	3,220	2,257	3,615	2,187	3,537	2,167
LU	2,172	816	2,309	719	2,291	677	2,348	701	2,512	640
USAO	1,040	396	1,068	424	1,057	394	1,045	372	1,063	351
OPSU	981	261	978	263	928	233	1,045	153	921	159
RSU ²	1,454	1,331	1,736	1,490	1,884	1,596	1,984	1,702	2,079	1,637
Regional	35,582	16,055	37,608	16,290	37,955	15,763	39,682	16,227	39,584	16,299
Total 4-Year	73,857	27,921	78,335	28,260	79,629	28,464	81,802	29,003	81,051	28,717
CSC	1,113	658	1,285	737	1,305	888	1,351	904	1,326	785
EOSC	1,047	913	1,102	930	1,043	914	1,081	923	1,030	593
MSC	1,137	610	1,109	663	1,117	720	1,156	742	1,195	867
NEOAMC	1,331	445	1,358	461	1,446	601	1,466	526	1,391	521
NOC	1,768	995	1,912	1,013	2,018	1,509	2,458	1,723	2,724	1,799
TCC	5,285	11,322	6,074	10,864	6,253	10,313	6,390	10,329	6,068	10,086
OSU-OKC	1,369	3,106	1,684	3,223	1,953	3,576	1,908	3,694	1,821	3,731
OSUTB-OKM	1,690	647	1,770	869	1,810	826	1,889	734	1,832	818
WOSC	870	1,303	892	1,095	919	1,111	835	1,014	856	1,092
RCC	839	900	945	904	887	981	970	896	988	910
CASC	1,120	1,045	1,234	1,032	1,369	1,034	1,537	1,115	1,484	939
SSC	1,102	832	1,184	860	1,245	950	1,283	854	1,195	823
RSC	2,526	4,901	2,708	5,155	3,079	6,166	2,924	5,378	2,984	4,985
OCCC	4,171	6,358	4,206	6,638	4,782	7,024	5,135	7,119	4,877	7,609
Community	25,368	34,035	27,463	34,444	29,226	36,613	30,383	35,951	29,771	35,558
PUBLIC TOTAL	99,225	61,956	105,798	62,704	108,855	65,077	112,185	64,954	110,822	64,275

SOURCE: OGR2300, 1/22/07.

¹ Did not report for 2001-02, data are from previous year.

² RSU began offering bachelor's degrees fall 2000.

Five-Year Comparison of Full-Time and Part-Time Percentages

This table shows a five-year history of fall semester full-time and part-time enrollment percentages at all public institutions. In the fall semester, an undergraduate student must be enrolled in at least 12 credit hours and a graduate student must be enrolled in at least 9 credit hours to be classified as full-time.

- The full-time enrollment percentage at public institutions increased from 61.6 percent in fall 2001 to 63.3 percent in fall 2005. The part-time enrollment percentage decreased from 38.4 percent in fall 2001 to 36.7 percent in fall 2005.

PERCENTAGE OF HEADCOUNT ENROLLMENT AT PUBLIC INSTITUTIONS BY FULL-TIME AND PART-TIME STATUS FALL 2001 TO FALL 2005

Institution	Fall 2001		Fall 2002		Fall 2003		Fall 2004		Fall 2005	
	Full-Time	Part-Time	Full-Time	Part-Time	Full-Time	Part-Time	Full-Time	Part-Time	Full-Time	Part-Time
OU	74.7%	25.3%	75.8%	24.2%	75.7%	24.3%	75.7%	24.3%	75.7%	24.3%
OU HSC	70.7%	29.3%	70.6%	29.4%	71.8%	28.2%	73.8%	26.2%	74.5%	25.5%
OSU	78.7%	21.3%	79.5%	20.5%	78.1%	21.9%	78.1%	21.9%	78.5%	21.5%
OSU-CHS ¹	100.0%	0.0%	93.3%	6.7%	91.7%	8.3%	89.9%	10.1%	96.0%	4.0%
Research	76.3%	23.7%	77.3%	22.7%	76.6%	23.4%	76.7%	23.3%	77.0%	23.0%
UCO	63.6%	36.4%	64.7%	35.3%	66.3%	33.7%	66.7%	33.3%	67.3%	32.7%
ECU	74.7%	25.3%	74.5%	25.5%	74.3%	25.7%	72.6%	27.4%	72.0%	28.0%
NSU	71.4%	28.6%	74.2%	25.8%	74.0%	26.0%	73.3%	26.7%	70.8%	29.2%
NWOSU	71.9%	28.1%	72.8%	27.2%	73.1%	26.9%	76.0%	24.0%	75.5%	24.5%
SEOSU	76.5%	23.5%	76.8%	23.2%	76.8%	23.2%	78.6%	21.4%	78.9%	21.1%
SWOSU	83.4%	16.6%	82.4%	17.6%	84.9%	15.1%	83.6%	16.4%	83.8%	16.2%
CU	58.3%	41.7%	58.6%	41.4%	58.8%	41.2%	62.3%	37.7%	62.0%	38.0%
LU	72.7%	27.3%	76.3%	23.7%	77.2%	22.8%	77.0%	23.0%	79.7%	20.3%
USAO	72.4%	27.6%	71.6%	28.4%	72.8%	27.2%	73.7%	26.3%	75.2%	24.8%
OPSU	79.0%	21.0%	78.8%	21.2%	79.9%	20.1%	87.2%	12.8%	85.3%	14.7%
RSU ²	52.2%	47.8%	53.8%	46.2%	54.1%	45.9%	53.8%	46.2%	55.9%	44.1%
Regional	68.9%	31.1%	69.8%	30.2%	70.7%	29.3%	69.7%	30.3%	70.8%	29.2%
Total 4-Year	72.6%	27.4%	73.5%	26.5%	73.7%	26.3%	73.1%	26.9%	73.8%	26.2%
CSC	62.8%	37.2%	63.6%	36.4%	59.5%	40.5%	59.9%	40.1%	62.8%	37.2%
EOSC	53.4%	46.6%	54.2%	45.8%	53.3%	46.7%	53.9%	46.1%	63.5%	36.5%
MSC	65.1%	34.9%	62.6%	37.4%	60.8%	39.2%	60.9%	39.1%	58.0%	42.0%
NEOAMC	74.9%	25.1%	74.7%	25.3%	70.6%	29.4%	73.6%	26.4%	72.8%	27.2%
NOC	64.0%	36.0%	65.4%	34.6%	57.2%	42.8%	58.8%	41.2%	60.2%	39.8%
TCC	31.8%	68.2%	35.9%	64.1%	37.7%	62.3%	38.2%	61.8%	37.6%	62.4%
OSU-OKC	30.6%	69.4%	34.3%	65.7%	35.3%	64.7%	34.1%	65.9%	32.8%	67.2%
OSUTB-OKM	72.3%	27.7%	67.1%	32.9%	68.7%	31.3%	72.0%	28.0%	69.1%	30.9%
WOSC	40.0%	60.0%	44.9%	55.1%	45.3%	54.7%	45.2%	54.8%	43.9%	56.1%
RCC	48.2%	51.8%	51.1%	48.9%	47.5%	52.5%	52.0%	48.0%	52.1%	47.9%
CASC	51.7%	48.3%	54.5%	45.5%	57.0%	43.0%	58.0%	42.0%	61.2%	38.8%
SSC	57.0%	43.0%	57.9%	42.1%	56.7%	43.3%	60.0%	40.0%	59.2%	40.8%
RSC	34.0%	66.0%	34.4%	65.6%	33.3%	66.7%	35.2%	64.8%	37.4%	62.6%
OCCC	39.6%	60.4%	38.8%	61.2%	40.5%	59.5%	41.9%	58.1%	39.1%	60.9%
Community	42.7%	57.3%	44.4%	55.6%	44.4%	55.6%	45.8%	54.2%	45.6%	54.4%
Total Public	61.6%	38.4%	62.8%	37.2%	62.6%	37.4%	63.0%	37.0%	63.3%	36.7%

SOURCE: OCR2300, 5/26/05.

¹ Did not report for 2001-02, data are from previous year.

² RSU began offering bachelor's degrees fall 2000.

Source: Oklahoma State Regents for Higher Education, June 2007

Non-Credit Activity

The following tables describe the nature and level of non-credit activity provided by Oklahoma public colleges and universities that reported offering non-credit activities. The information provided indicates a range of activities and groups served. Participant contacts indicate the number of participants recorded as attending and participating in non-credit activities; therefore, an individual citizen may be counted in more than one activity. In some activities, participant contacts may be estimated, as in large lectures. Non-credit courses and activities are provided on a self-supporting basis and are not reported for state funding.

- During 2005-06, 23 public institutions reported participant contacts totaling 675,348 in non-credit activities at two research universities, nine regional universities, and 12 community colleges. This compares to 344,568 participant contacts for 2001-02.
- Between 2001-02 and 2005-06, non-credit activity participants averaged 435,656 for the state system. At the research universities non-credit activity averaged 314,354 participants; the regional universities, 61,084; and the community colleges, 60,218. Non-credit activity fluctuates widely from year to year.
- The Group Served table reflects the reporting institution's determination of the group to which an activity was primarily directed. According to the table, the major groups served were education; arts, sports and media; healthcare; and protective services.
- The Format table shows that courses and special training programs are the most common formats for non-credit activities.
- The four counties where the most participation took place were Cleveland, Oklahoma, Tulsa and Comanche counties.
- The Major Focus of Activity table reflects the reporting institution's determination of the primary focus of the activity. According to the table, most non-credit activity was focused toward education; healthcare; arts, entertainment and recreation; and other services.
- The Method of Delivery table indicates that 98.1 percent of non-credit activity participants were traditionally enrolled, while 0.4 percent participated in courses online.

**PARTICIPANT CONTACTS IN NON-CREDIT ACTIVITIES CONDUCTED BY PUBLIC INSTITUTIONS
2001-02 TO 2005-06**

Institution	2001-02	2002-03	2003-04	2004-05	2005-06
OU	154,719	497,036	80,406	100,184	489,825
OSU	61,245	58,024	47,066	18,879	64,387
UCO	8,013	9,700	5,700	3,100	3,259
ECU	20,395	20,843	19,907	27,907	25,464
NSU	941	1,090	959	270	1,052
SEOSU	1,965	1,736	2,210	1,772	2,395
SWOSU	1,350	540	1,859	2,241	2,974
CU	19,641	36,003	38,835	1,408	28,111
USAO	54	19	2,462	4,870	4,252
OPSU	289	244	313	0	158
RSU	147	199	328	0	445
CSC	**	212	957	201	92
EOSC	**	8,203	3,584	7,553	3,443
MSC	**	16	14	18	8
NEOAMC	13,924	220	415	873	1,150
NOC	342	458	252	219	273
TCC	9,109	6,583	8,665	3,270	11,559
OSU-OKC	2,354	2,472	3,327	2,348	4,450
OSUTB-OKM	584	546	635	377	509
RCC	11,387	8,359	4,898	8,335	8,895
SSC	125	107	71	210	143
RSC	26,245	36,641	22,403	14,099	11,619
OSCC	11,739	9,871	8,659	7,184	10,885
Total	344,568	699,122	253,925	205,318	675,348

SOURCE: Non-credit Activity by Institutions, 2/4/07. ** Did not report

**PARTICIPANT CONTACTS IN NON-CREDIT ACTIVITIES CONDUCTED IN OKLAHOMA
BY PUBLIC INSTITUTIONS, TYPE OF INSTITUTION AND GROUP SERVED
2005-06**

Group Served	Type of Institution			Total 2005-06
	Research	Regional	Community	
	2005-06	2005-06	2005-06	
Management	14,875	616	953	16,444
Business and Financial Operations	574	287	353	1,214
Computer and Mathematical	827	1,011	853	2,691
Architecture and Engineering	227	40	205	472
Life, Physical, and Social Science	666	2,134	4	2,804
Legal	532	463	25	1,020
Education, Training, and Library	399,118	12,208	5,197	416,523
Arts, Design, Sports, and Media	29	8,090	4,065	12,184
Healthcare Practitioners and Technical	727	3,795	488	5,010
Healthcare Support	1,583	644	1,576	3,803
Protective Service	4,579	42	1,511	6,132
Food Preparation and Serving	0	1	585	586
Personel Care and Service	72	173	75	320
Office and Administrative Support	129	0	22	151
Farming, Fishing, and Forestry	0	55	1,598	1,653
Construction and Extraction	0	0	228	228
Installation, Maintenance, and Repair	183	0	359	542
Production	210	0	1,622	1,832
Transportation and Material Moving	5	0	556	561
Military-Specific	80	500	1,108	1,688
Other	76,107	11,698	31,500	119,305
TOTAL	500,523	41,757	52,883	595,163

SOURCE: Non-credit Activity by Group Code, 2/4/07.

**BY TYPE OF INSTITUTION AND FORMAT OF NON-CREDIT ACTIVITY
2003-04 TO 2005-06**

Format of Activity	Type of Institution									Total		
	Research			Regional			Community			02-03	03-04	05-06
	03-04	04-05	05-06	03-04	04-05	05-06	03-04	04-05	05-06	02-03	03-04	05-06
Conference	15,394	24,223	12,541	6,437	2,592	9,651	3,058	1,539	1,402	24,889	28,354	23,594
Institute	3,160	2,640	1,338	641	70	860	12,257	0	310	16,058	2,710	2,508
Course	35,816	8,238	288,138	7,058	6,394	3,134	22,843	18,592	27,129	65,717	33,224	318,401
Workshop	27,178	42,900	16,959	19,776	18,125	5,357	2,607	3,569	4,998	49,561	64,594	27,314
Seminar	16,824	16,594	14,218	6,102	989	2,225	5,107	8,075	2,765	28,033	25,658	19,208
Special Training Program	8,795	16,942	162,453	10,206	2,514	799	6,220	9,967	10,400	25,221	29,423	173,652
Correspondence	1,500	305	1	76	883	1,182	0	525	17	1,576	1,713	1,200
Other	18,805	7,221	4,875	22,277	10,001	18,549	1,788	2,420	5,862	42,870	19,642	29,286
Totals	127,472	119,063	500,523	72,573	41,568	41,757	53,880	44,687	52,883	253,925	205,318	595,163

SOURCE: Non-credit Activity by Activity Format, 2/4/07.

**GEOGRAPHIC ORIGIN OF PARTICIPANT CONTACTS IN NON-CREDIT ACTIVITIES CONDUCTED BY PUBLIC
INSTITUTIONS BY COUNTY
2003-04 TO 2005-06**

	2003-04	2004-05	2005-06		2003-04	2004-05	2005-06		2002-03	2004-05	2005-06
Adair	103	87	191	Grant	40	188	11	Nowata	54	7	316
Alfalfa	276	72	29	Greer	125	0	0	Okfuskee	391	189	183
Atoka	196	193	388	Harmon	1	0	0	Oklahoma	61,587	53,315	102,453
Beaver	19	0	0	Harper	0	7	0	Okmulgee	1,613	852	914
Beckham	261	111	225	Haskell	118	115	104	Osage	405	211	294
Blaine	114	86	34	Hughes	228	0	5	Ottawa	718	768	1,488
Bryan	2,666	1,851	2,144	Jackson	267	319	342	Pawnee	120	19	2,163
Caddo	160	77	338	Jefferson	0	4	172	Payne	9,795	4,864	1,604
Canadian	5,702	8,556	10,420	Johnston	190	129	101	Pittsburg	1,468	967	2,317
Carter	854	680	490	Kay	1,095	1,001	1,294	Pontotoc	8,589	16,102	819
Cherokee	1,715	681	972	Kingfisher	74	44	44	Pottawatomie	1,087	585	1,674
Choctaw	297	220	179	Kiowa	225	186	99	Pushmataha	177	155	96
Cimarron	2	3	0	Latimer	2,733	7,505	3,026	Roger Mills	579	0	5
Cleveland	39,358	46,293	170,910	LeFlore	1,304	449	420	Rogers	1,002	608	820
Coal	0	0	22	Lincoln	527	111	182	Seminole	409	381	378
Comanche	37,278	2,493	22,360	Logan	384	41	71	Sequoyah	837	313	803
Cotton	125	0	135	Love	122	230	57	Stephens	1,143	683	1,964
Craig	610	497	383	Major	67	8	640	Texas	431	140	104
Creek	1,717	344	290	Marshall	94	85	195	Tillman	0	0	0
Custer	2,242	1,952	2,654	Mayes	807	81	134	Tulsa	29,671	21,958	25,798
Delaware	805	269	320	McClain	251	296	42	Wagoner	324	230	570
Dewey	1	0	21	McCurtain	1,208	72	153	Washington	417	534	866
Ellis	305	0	0	McIntosh	15	0	195	Washita	376	35	15
Garfield	1,509	1,415	1,404	Murray	283	43	138	Woods	123	14	47
Garvin	431	411	447	Muskogee	2,341	964	1,329	Woodward	427	289	240
Grady	2,742	3,618	1,946	Noble	282	40	203	Unknown	1,274	525	208,460

SOURCE: Non-credit Activity by County, 2/4/07.

Oklahoma Total	442,363	185,571	579,650
Out-of-State Total	256,759	19,747	15,513
Grand Total	699,122	205,318	595,163

**PARTICIPANT CONTACTS IN NON-CREDIT ACTIVITIES CONDUCTED
BY TYPE OF INSTITUTION AND MAJOR FOCUS OF ACTIVITY
2005-06**

Major Focus of Activity	Research	Regional	Community	Total
Agriculture, Forestry, Fishing & Hunting	97	55	1,308	1,460
Professional, Scientific & Technical Services	4,542	5,108	254	9,904
Mining	0	0	43	43
Management of Companies & Enterprises	437	824	2,396	3,657
Utilities	71	0	60	131
Administrative and Support/Waste Mgt/Remediation Services	183	0	0	183
Construction	13	0	228	241
Management/Remediation Services	25	0	103	128
Educational Services	467,898	12,779	11,253	491,930
Health Care & Social Assistance	11,314	3,201	2,097	16,612
Arts, Entertainment & Recreation	120	16,063	12,507	28,690
Information	137	300	522	959
Finance & Insurance	47	2	22	71
Real Estate & Rental/Leasing	13	2	64	79
Other Services	15,211	3,219	19,007	37,437
Public Administration	87	200	1,525	1,812
Manufacturing	25	0	383	408
Transportation & Warehousing	204	0	577	781
Wholesale Trade	9	0	0	9
Retail Trade	47	3	170	220
Accommodation & Food Services	1	0	407	408
TOTAL	500,481	41,756	52,926	595,163

SOURCE: Non-credit Activity by Activity Focus, 2/4/07.

**PARTICIPANT CONTACTS IN NON-CREDIT ACTIVITIES CONDUCTED IN OKLAHOMA
BY PUBLIC INSTITUTIONS BY TYPE OF INSTITUTION AND METHOD OF DELIVERY
2005-06**

Method of Delivery	Research 2005-06	Regional 2005-06	Community 2005-06	Total	% of Total
Computer-based	47	19	1,517	1,583	0.3%
Correspondence	14	1,128	0	1,142	0.2%
Interactive Video	46	0	0	46	0.0%
Other	3,043	1,661	675	5,379	0.9%
Satellite/Microwave	271	2	475	748	0.1%
Telecourse	45	0	0	45	0.0%
Traditional	494,991	38,861	49,746	583,598	98.1%
Online	2,066	86	470	2,622	0.4%
TOTAL	500,523	41,757	52,883	595,163	99.6%

SOURCE: Non-credit Activity by Method of Delivery, 2/4/07.