
GRANT NEWS

OKLAHOMA HIGHER EDUCATION

APRIL-MAY-JUNE-JULY 2010

OSU-CHS Creates Kaiser Chair

Oklahoma State University announced plans for a **George Kaiser Family Foundation Chair in Excellence in Medical Education and Service** at the OSU Center for Health Sciences. The new chair is funded by a previous contribution from the **George Kaiser Family Foundation**, which is matched by a challenge gift from **T. Boone Pickens** and when matched by the state of Oklahoma will total **\$4 million**.



The OSU Center for Health Sciences in Tulsa has presented 60 Oklahoma hospitals with grants of **\$9,100** each from the **U.S. Department of Health and Human Services' Health Resources & Services Administration Small Hospital Improvement Program**. The university received **\$546,037** to distribute equally among the hospitals to pay for computer software and hardware, training hospital staff on computer information systems and to implementation of systems.

OSU Center Distributes Grants to OK Hospitals

The **NSF OSU Erosion Study** Oklahoma State University's **Garey Fox**, associate professor of biosystems and agricultural engineering, has been awarded a **\$310,000 National Science Foundation** grant to study the processes of stream bank erosion and failure.

NSF OSU Erosion Study

Oklahoma State University's **Garey Fox**, associate professor of biosystems and agricultural engineering, has been awarded a **\$310,000 National Science Foundation** grant to study the processes of stream bank erosion and failure.

OSU- Tulsa Helmerich Research Center

Tulsa's **Helmerich Research Center** is no small endeavor with its 123,000 SF of labs, offices and support spaces and high-tech research testing the limits of advanced materials knowledge. Located on the **OSU-Tulsa** campus north of downtown, the **Helmerich Research Center** has made significant strides in hiring and equipping a core group of researchers in the two years since it opened. **Kenneth Ede**, assistant dean of **OSU's College of**



Engineering, Architecture & Technology manages the center.

Researchers on staff include:

- **Raman Singh**, who directs the **Mechanics of Advanced Materials Laboratory**. Funding for his projects comes from the **National Science Foundation, NASA, OCAST** and industry sources.
- **Jay Hanan** directs more than **\$2 million** in research funding from several source: the aerospace industry, **Air Force, Army, NASA, National Institute of Health, Naval Research Laboratory, OCAST** and others.
- **Khaled Sallam**, fluid dynamics, laser diagnostics, holography, atomization and sprays, droplet based microfluids, nanofibers and nanoparticles, bioflows, nanotechnology and bioengineering.
- **Lorenzo Cremaschi**, waste heat and recovery technologies, thermal management of electronics, heat exchanger prototypes and food refrigeration and freezing.
- **Reza Abdolvand**, design, fabrication and characterization of micro mechanical resonators

GRANT NEWS

OKLAHOMA HIGHER EDUCATION

APRIL-MAY-JUNE-JULY 2010

OSU Researcher Award for International Leadership

Barbara Stoecker, a Nutritional Sciences Regents Professor, was selected for the 2010 Michael P. Malone International Leadership Award sponsored by the Association of Public and Land-grant Universities. The award honors people who have made noteworthy contributions to international education at public and land-grant institutions. Stoecker worked with students and faculty to develop a human nutrition graduate program at Hawassa University in Ethiopia.

OSU Hotel and Restaurant Administration Students Study Abroad

An Oklahoma State University alum, **Steve Jorns** 1971 graduate, gave \$500,000 to the university to help hotel and restaurant administration students study abroad. His grant, which will be matched by the **Pickens Legacy Scholarship Match**, will provide \$50,000 a year once it is fully endowed. Jorns, who lives in Fort Worth, founded **American General Hospitality** in 1981. The company went through a series of mergers and eventually became part of **Interstate Hotels and Resorts**.



OSU Fulbright Awards



• Three faculty members were selected as Fulbright Scholars. They will receive grants to spend an academic year teaching and researching at universities abroad. **Heidi Hoffer**, professor of theater, will travel to

South Africa. **Allen Scott**, associate professor of music history and coordinator of music graduate studies, and chemistry professor **Jeffrey White**



will travel to Poland.



• Three seniors received Fulbright grants to teach or study abroad. **Jennifer Lawmaster**, of **Norman**, will teach English in Germany; **Brandon McVey**, of **Tulsa**, will study monetary policy in Germany; and **Jared Crain**, of **Woodward**, will research ways to improve nitrogen management and environmental stewardship in Mexico.

• Eight students were selected as **National Science Foundation Graduate Fellows**. The fellowship is worth \$121,500 over three years. Fellows are expected to become experts in their field who will contribute to future research, teaching and innovations. The OSU fellows are: **Tomica Blocker**, **Bel Aire, Kan.**; **Brandon Brooks**, **Tulsa**; **Jeremy Hill**, **Midwest City**; **Jessica Lay**, **Tulsa**; **Russell McMahan**, **Tulsa**; **Ryan Paul**, **Tulsa**; **Kevin Stunkel**, **Bethel, Conn.**; and **Da-Jiang Zheng**, **Stillwater**.

• Two teams led by **Andrew Arena Jr.**, a professor of engineering, placed first and second at the **American Institute of Aeronautics' Design/Build/Fly International Competition**. Students built unmanned planes to fly in three challenge missions.



GRANT NEWS

OKLAHOMA HIGHER EDUCATION

APRIL-MAY-JUNE-JULY 2010

OSU Receives Oilman Grant for Scholarships

C. Hubert Gragg, a retired oilman who lives in Newcastle, made a gift of \$1 million to support scholar development at Oklahoma State University. Although Gragg didn't attend OSU, he has great admiration for several people who did, including his oldest son, a nephew and former Gov. Henry Bellmon. The grant will provide \$750,000 to the Bellmon Scholarship Endowment and \$250,000 to the Bellmon Program Endowment, which help fund research and study abroad opportunities for students. The Pickens Legacy Scholarship Match will provide matching funds for the scholarship portion of the gift, creating a total of \$1.75 million in new endowed funds. Together, those sources of additional funding will translate to about \$87,500 a year for students in the forms of scholarships and support. The gift will support a variety of programs for students such as Alesia Hallmark, a junior studying botany and zoology. Hallmark has received research scholarships every year since she arrived at OSU. She recently returned from a national research conference, where she presented her research about cranial differences in bats.

Carl Albert State College

CASC received \$25,000 from the Carl Perkins Supplemental Guidance Fund.



OSCC and ONG Alliance for Natural Gas Vehicles

An alliance between the automotive technology department at Oklahoma City Community College and Oklahoma Natural Gas means students get hands-on training working with compressed natural gas vehicles, and instructors get guidance developing courses. The partnership is among 22 honored this year by the Oklahoma State Regents for Higher Education's Economic Development Partnership Recognition Program. OCCC instructor Richard Steere said students in the alternative fuels program can intern with ONG, a valuable step to becoming skilled and gaining certification as a CNG technician. ONG helped OCCC develop certification and installation classes after instructors asked them what courses would be most beneficial to employers. As the result of this partnership, OCCC is contacted regularly by Oklahoma companies wanting to be involved in the CNG servicing of vehicles.



OCCC Grant from Dollar General Literacy Foundation

The Community Outreach and Education department (COE) at OCCC was recently awarded \$20,000 from the Dollar General Literacy Foundation. The Adult Learning Center provides free GED and ESL classes to community members throughout the Oklahoma City metro area for all adults ages 16 and older.



GRANT NEWS

OKLAHOMA HIGHER EDUCATION

APRIL-MAY-JUNE-JULY 2010

ECU professor honored by Historical Association

Dr. Christopher Bean, assistant professor of history and Native American studies at East Central University, was honored earlier this spring by the **Texas State Historical Association**. He received the **H. Bailey Carroll Award** for the best article that appeared in the association's Southwestern Historical Quarterly publication. His article was titled "Death of a Carpetbagger: The George Washington Smith Murder and Stockade Trial in Jefferson, Texas, 1868-1869." Bean was one of 11 people honored with awards and fellowships for outstanding research, teaching and scholarship in Texas history.

ECU Band Director Awarded \$1,000



Dr. Allen Correll, director of bands at East Central University, has received the \$1,000 Provost's Ph.D.

Dissertation Prize in the field of humanities and fine arts from the University of Oklahoma. He received the award for his dissertation, "Percy Grainger's Wind Band Setting of The Immovable Do: Its History and Analysis." OU faculty members nominated doctoral candidates for the dissertation prize who received degrees during 2009. Correll earned a doctor of musical arts degree in 2009. The dissertation prize and the Graduate Teaching Assistant Award were presented to Correll and three other recipients at OU in May. Correll received a grant to travel to Melbourne, Australia, in December 2007 to do research

for his dissertation. Grainger's library is at the University of Melbourne. Correll gave a talk on Grainger in Ada.

ECU Graduate Fulbright Teaching Assistantship



The university's first recipient of a prestigious **Fulbright** grant, **Dianna Kriegh** of **Vanoss**, has been awarded a **Fulbright English Teaching Assistantship** through the Fulbright U.S. Student Program which offers fellowships for

study, research and teaching in other countries. Approximately 7,500 Fulbright grants are awarded annually in a number of categories for students, scholars, teachers, professionals, artists, musicians and scientists. The goal of the English Teaching Assistantship is for foreign students to improve their English language abilities and knowledge of the United States while American students enhance their knowledge and language skills of their host country. Kriegh will be one of 90 English teaching assistants going to South Korea. Fulbright will pay her travel and some other expenses. Her Korean school will provide housing with a family, and pay her a stipend of 1.6 million won each month, or \$14. She will be expected to teach 40 students 20 hours per week, plus spend 20 to 30 hours planning, grading papers and helping Korean teachers.

GRANT NEWS

OKLAHOMA HIGHER EDUCATION

APRIL-MAY-JUNE-JULY 2010

ECU Linscheid Library Academic Friends Receive Folio Grant

The **Linscheid Library Academic Friends**, a new organization that supports East Central University's library, has received a **\$300** seed grant from the **Friends of Libraries in Oklahoma (FOLIO)** to help with printing promotional materials and start-up expenses. The LLAFF was established last year to provide organizational and financial support for Linscheid Library that is not available from public funding. The organization raises money to sponsor programs for the public such as cultural or art exhibits, readings by authors, book signings, film screenings or displays of student work. **Dr. Adrianna Lancaster** is director of the library, and **Dana Belcher** is assistant director of the library. **Dr. Steve Schmelling** is president of LLAFF. Other officers are **Dr. Shelley Ross Hamby**, vice president; and **Paul Keefer** and **Dr. Anne Davis**, members-at-large. Lancaster and Belcher are ex-officio members.



TCC

TCC's Information Technology Health Care Community College Consortium received **\$887,686** from the **Office of National Coordinator for Health Information Technology**. **Sandy Smith** is the lead faculty of TCC's project.



SE Small Business Office wins Grant



The state office of the **Oklahoma Small Business Development Center** at **Southeastern Oklahoma State University** is among 10 centers nationwide to receive a grant award to increase entrepreneurial assistance to veterans. The grants will provide funding for programs to veterans that promote business ownership and provide services to small businesses dealing with the deployment of key personnel overseas. The Oklahoma center will work with military installations to provide services and training to veterans, military personnel and their families.

SE Grant from Oklahoma Masonic Foundation



The **Masonic Charity Foundation of Oklahoma** granted funds to start the **"Masonic Institute for Professional Development and Lectureship Series"** has been established at **Southeastern Oklahoma State University**. This Institute and Lectureship Series is funded from the endowment and facilitated by the faculty and staff of the Southeastern Department of Education.

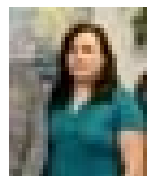
GRANT NEWS

OKLAHOMA HIGHER EDUCATION

APRIL-MAY-JUNE-JULY 2010

SWOSU Receives NSF Biology Grant

Southwestern Oklahoma State University and Dr. Andrea Holgado, assistant professor in the biological sciences department, received \$229,767 from the National Science Foundation for scientific research. Dr.



Holgado's project titled "Modulation of Synaptic Vesicle Exocytosis in C elegans FY10" will enhance and promote career development, education and community outreach. This continuing grant is a four-year grant from NSF for a total amount of \$698,835. Holgado is working with co-principal investigator Bing Zhang, assistant professor in the zoology department at the University of Oklahoma. The research for the grant will primarily be conducted by undergraduate students enrolled at SWOSU. This project will not only represent an exceptional opportunity for SWOSU students to experience this unexplored scientific world but will also assist in increasing the acceptance rate of graduates pursuing careers in research and professional schools.

SWOSU Received Social Work Grant

Ms. Debbi McFarlin, SWOSU Instructor received \$1,600 for Social Work Program Adjunct Teaching: Child

Abuse Neglect Enhancement Program from The University of Oklahoma (through University Outreach and the



School of Social Work). The goal of this project is to support adjunct teaching in a summer web-based course specific to child abuse and neglect issues, inclusive of family dynamics, societal impact and policy implications for students pursuing child welfare careers.

SWOSU Cheyenne & Arapaho Tribal College Botany Grant

Mr. Alden Whiteman, Cheyenne & Arapaho Tribal College Vice President received \$2,500 for Tsistsistas-Hinonoei Walk Among Sacred Beauty from the Tides Foundation. The goal of this project



is support travel to the spiritual home of the Cheyenne-Arapaho Tribes in South Dakota's Bear Butte State Park for students and botany faculty to study the plants and soil in the state park.

OU Receives \$2.5 Million from ConocoPhillips

Conoco Phillips has granted \$2.5 million to the University of Oklahoma to benefit the Price College of Business, College of Engineering,

Mewbourne College of Earth and Energy, the SPIRIT Scholars program, and a variety of university diversity programs and student organizations. Sig Cornelius, Conoco-Phillips senior vice president of finance and chief financial officer, and Nikki Benson, the corporation's university recruiting director, presented the donation.



GRANT NEWS

OKLAHOMA HIGHER EDUCATION

APRIL-MAY-JUNE-JULY 2010

OU's Wireless EMC Center Wins Grant



The University of Oklahoma's Center for the Study of Wireless Electromagnetic Compatibility, or Wireless EMC Center and Hank Grant, OU College of Engineering professor and Wireless EMC Center Director have been awarded a \$275,000 grant by the National Science Foundation to expand the Wireless EMC Center's testing and research capabilities. The NSF's multi-university I/UCRC Program will create industry and university research centers industry topics.

OU Grant from Apache Corporation

The University of Oklahoma's Mewbourne School of Petroleum and Geological Engineering and Director Chandra Rai received \$1 million from Apache Corp. to further the school's existing research and add capabilities to its petroleum laboratory. A portion will be named the Apache Petrophysics Research Center. Petrophysics is the study of rocks, pores and fluids and the characterization of fluid flow through permeable media. It integrates data from multiples sources and disciplines. Apache's grant will be used to evaluate new methods of measuring cuttings so that profiles of the physical properties of rock can be described in horizontal wellbores.



NASA Honors OU Professor Xuguang Wang, University of Oklahoma assistant professor of meteorology,

received one of 18 awards for research and teaching from NASA's New Investigator Program in Earth Science. Wang submitted a proposal on developing better ways to use numerical models, based on satellite radiance data, to improve weather forecasting. Her improved data assimilation system is called hybrid ensemble-GSI. Wang also will develop and teach new course material on research education at the National Weather Center, and a high school program that introduces students to remote sensing and numerical weather forecasting.



OUHSC Researcher Makes Vaccine Breakthrough



Dr. William Hildebrand received \$15 million from the National Institutes of Health, the Oklahoma Center for the Advancement for Science and Technology, and other entities. His latest research provides a vaccine that activates a distinct part of the immune system, which has both treatment and prevention potential for cancer, viruses and HIV. Much of his research has focused on the West Nile virus and breast cancer.

GRANT NEWS

OKLAHOMA HIGHER EDUCATION

APRIL-MAY-JUNE-JULY 2010

OUHSC Research: Coffee Reduces Diabetes Risk in Indians



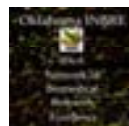
Dr. Madona Azar, an endocrinologist at the Harold Hamm Oklahoma Diabetes Center at the OU Health Sciences Center and University of Oklahoma researchers have found that American Indians who drank more than 12 cups of coffee every day reduced their risk of developing Type 2 diabetes by nearly 70 percent. Research was funded by **NIH**. Oklahoma has a high rate and prevalence of Type 2 diabetes, particularly among American Indians.

OUHSC Grant for Immune System Research

Dr. Sunil Joshi, Department of Microbiology and Immunology at OUHSC, brings a powerful perspective to his immunology research at the University of Oklahoma Health Sciences Center. He suffered from malaria, tuberculosis and other diseases in India, recovering while watching many others die. Joshi received **\$100,000** from the **Bill and Melinda Gates Foundation** to use electric pulse waves to stimulate the cells that control immunity. For a year, Joshi's research will be working with cells. He can apply for the second phase for \$1 million from the Gates Foundation Grand Challenges Explorations initiative for exploring innovative ways to improve health in developing countries. Joshi's grant was one of 78 awarded from 2,700 proposals. **Dr. Mark Lang** is Joshi's mentor and fellow professor in the

UCO INBRE Grants

INBRE and OSRHE grants have been awarded to seven UCO faculty members.
INBRE grants:



- **Dr. Melville Vaughan, Associate Professor of Biology** – Environmental contribution to the epithelial to mesenchymal transition of Ras-overexpressing keratinocytes in vitro **\$40,849**
- **Dr. Hari Kotturi, Assistant Professor of Biology** – Effect of Bitter Melon leaf extract on *mdr1* gene expression and function of P-gp protein in drug-resistant colon cancer cells **\$32,270**
- **Dr. Wei Chen, Professor of Engineering & Physics and Assistant Dean** – Enhancing laser immunotherapy for treatment of metastatic tumors by reducing TGF- β levels in tumor microenvironment **\$63,231**
- **Dr. Yuhao Jiang, Assistant Professor of Engineering & Physics** – Quantitative ultrasound image processing for characterization of cell-morphology correlated optical properties of prostate cancer **\$32,976**
- **Dr. Morshed Khandaker, Assistant Professor of Engineering & Physics** – Equipment grant: Experimental and numerical testing of an elastomer-type prosthetic disc **\$15,000**
- **Dr. Lilian Chooback, Assistant Professor of Chemistry** – Cloning and characterization of yeast aminotransferase **\$23,482**
- **Dr. Daniel Endres, Professor of Mathematics & Statistics** – Advanced stochastic models for DNA microsatellite somatic instability **\$25,000**

GRANT NEWS

OKLAHOMA HIGHER EDUCATION

APRIL-MAY-JUNE-JULY 2010

UCO Small Business Grant from Kirkpatrick Bank

The **Small Business Development Center** based at the **University of Central Oklahoma** received **\$5,000** for community sponsorship from **Kirkpatrick Bank**, which has become the center's newest community partner. The funds will help the center address the needs of small businesses while developing a long-term relationship with Kirkpatrick Bank to provide more support for the area's beginning businesses.

UCO to Build Boathouse

The **University of Central Oklahoma Foundation** received a **\$500,000** pledge for the construction of the **CHK|Central Boathouse** on the Oklahoma River. The pledge was made by **UCO alumna Martha Burger, Senior Vice President of Human and Corporate Resources with Chesapeake Energy Corp.** Chesapeake Energy, which employs more than 300 UCO graduates, was the first investor in the **CHK|Central Boathouse**, pledging **\$3 million** to the project.

OCU Entrance Landscaping

The main entrance at **Oklahoma City University** will be decorated with 150 trees and shrubs within five years. The project is to use grants from the **Margaret Annis Boys Trust** and **Turf Appeal** to improve the campus landscape. The project leader is **Susan Barber, associate provost and biology professor.**

Adult Stem Cell Research Center Awards Grants

The **Oklahoma Center for Adult Stem Cell Research** has awarded **\$700,000** to



seven Oklahoma scientists to fund research involving adult stem cells.

The grants include:

-\$72,800 to Myron Hinsdale, Oklahoma State University, for using adult stem cells to heal lung disease

-\$72,800 to Pamela Lloyd, Oklahoma State University, for repair of damaged lung capillaries which could have implications for treatment of emphysema

-\$72,800 to Lin Liu, Oklahoma State University, to test if stem cells can be used to cure chronic obstructive pulmonary disease

-\$192,215 to Courtney Houchen, University of Oklahoma Health Sciences Center, to test how adult stem cells respond to different drugs and testing compounds

-\$56,654 to Leonidas Tsiokas, University of Oklahoma Health Sciences Center, for using stem cells to combat osteoporosis and other bone-loss diseases

-\$123,950 to Linda Thompson, Oklahoma Medical Research Foundation

-\$114,311 to Carol Webb, Oklahoma Medical Research Foundation

-\$4,000 in grants for researchers to attend scientific conferences

The Oklahoma Center for Adult Stem Cell Research is funded through a five-year grant from the **Oklahoma Tobacco Settlement Endowment Trust.**

GRANT NEWS

OKLAHOMA HIGHER EDUCATION

APRIL-MAY-JUNE-JULY 2010

NSU INBRE Grant



Dr. Joseph Ahlander received **\$53,920** from the University of Oklahoma Health Sciences Center through National Institute of Health **INBRE** project for “Developing an *in vivo* model of the human papillomavirus” to help

determine the effect of E5 expression on *Drosophila* development and test the hypothesis that E5 can induce the aberrant cell morphologies that are associated with cancer when expressed in the *Drosophila* epithelial tissues.

NSF INBRE Mentor Grant

Dr. Cindy Cisar and **Dr. Joseph Ahlander** received **\$4,400** from the Oklahoma State Regents for Higher education for the **INBRE Mentor Program** to provide summer training and supplies for students participating in the program.

NSU INBRE Equipment Grant

Dr. Kent Hawkins and **Dr. Ron Schaefer** received **\$34,950** from University of Oklahoma Health Sciences Center through the **NIH INBRE Project** for a



Rigid Videostroboscopic Endoscope system for use in research on the efficacy of our vocal hygiene program by training a group of high school cheerleaders how to use best vocal practices while cheering. The equipment will allow visual record and measure the effect of the collected data.

NSU SMALL BUSINESS GRANT

John Blue, Director of the NSU Oklahoma Small Business Development Center,



received **\$338,160** to provide comprehensive services and resources to existing and potential Oklahoma small businesses.

NSU Great Expectations Grant

Ms. Cheryl Price received **\$2,109,613** from a private foundation for **Great Expectations** to teach innovative and inspirational education techniques to school teachers in order to help revolutionize the classroom education experience of children.

NSU INBRE Grant



Dr. John DeBanzie received **\$45,340** from the Oklahoma **INBRE** project for release time and equipment for the 7th year of his **INBRE** research.

NSU Oklahoma Alliance for Manufacturing Excellence

Curtis Evans received **\$111,680** to support a manufacturing extension agent working at the Northeastern State University-Broken Arrow campus to assist local manufacturers in various ways to make their businesses more successful.

GRANT NEWS

OKLAHOMA HIGHER EDUCATION

APRIL-MAY-JUNE-JULY 2010

NSU Tobacco Research Center

Dr. Fritz Laux received **\$9,589** from the **Oklahoma Tobacco Research Center** to



gather data which can be used to estimate price determination by tribal and nontribal tobacco retailers which may illustrate revenue gains that could be realized for both tribal and

state governments, as well as the public health benefits that could come through continued and further harmonization of Oklahoma cigarette tax policies.

NSU Galaxy of Stars

Amber Cowan received **\$16,917**

from the **Oklahoma Arts Council** for a series of eclectic performances and educational events related to the performances. The series provides the community with



quality arts experiences to educate and engage audiences through diverse cultural components. The programming encourages and nurtures the role of the arts in the community.

NSU Symposium Powwow

Dr. Phyllis Fife received **\$2,760** from the **Oklahoma Arts Council** for Northeastern

State University's Annual Symposium on the American Indian Powwow presents diverse traditional and cultural dances of Oklahoma area tribes. The powwow provides an appropriate venue for the intergenerational activities characteristic of the native culture.



Green Country Jazz Series

Dr. Tommy Poole received **\$4,776** from the **Oklahoma Arts Council** to support the Green Country Jazz Series to bring internationally renowned jazz artists to Northeastern State University for a series of rehearsals, master classes, and concerts with the NSU Jazz Ensemble. The series will host Conrad Herwig (October 6-7, 2010), John

Riley (November 3-4, 2010), Terrell Stafford (March 6-7, 2011), and Seamus Blake (April 6-7, 2011).

The Green Country Jazz Series seeks to cultivate the growth and development of

jazz performances and education for students, music educators, and audiences throughout the region.



GRANT NEWS

OKLAHOMA HIGHER EDUCATION

APRIL-MAY-JUNE-JULY 2010

NSU Mediation Grant



Ann Wilkins was granted \$92,711 from the Oklahoma Supreme Court to support the 7th year of dispute resolution services to northeast Oklahoma.

OSRHE Campus Compact \$

Oklahoma Campus Compact has been awarded **\$169,800** for the *Students in Service* AmeriCorps program for education awards for students at Oklahoma colleges and universities for 2010-2011. As a selected program partner of the **Washington Campus Compact** grant from the **Corporation for National and Community Service**, Oklahoma Campus Compact will receive part time AmeriCorps slots for one hundred fifty (150) Oklahoma students to serve 300 hours of volunteer work for an education award of \$1,132.

Ardmore Higher Education Center



Dr. Steven Mills, Director and CEO of the **Ardmore Higher Education Center, SE Dr. Douglas McMillan, Vice President for Academic Affairs** and **Dr. Buddy**

Gaster, Dean of the School of Business, received **\$226,017** from the **Southern Oklahoma Memorial Foundation** of Ardmore to help fund a full-time SE faculty position in business management at AHEC. AHEC has an enrollment of 1,600 students 150-200 business majors.

Oklahoma Submits \$175M for Race to the Top

Gov. Brad Henry signed the state's second **Race to the Top** application requesting \$175 million in funding. Thirty-five states and the District of Columbia applied for the second round of federal stimulus funds, in an attempt to persuade a panel of five reviewers that their reforms are the "boldest" and deserving of a share of \$3.4 billion in federal stimulus funds. U.S. Secretary of Education Arne Duncan said he expects 15 states will receive funding. Finalists will be announced in August with winners being notified in September. If the state receives the grant, the funding will be distributed as follows:

- > \$23 million for a teacher evaluation system
- > \$18.6 million to 20 low performing schools
- > \$17 million assessment of the Common Core Curriculum Standards
- > \$15.3 million to create a student data system and training for teachers
- > \$8.7 million toward completing the state's student data system that follows academic growth from prekindergarten through college
- > \$2 million for professional development for teachers and principals
- > \$1.6 million for management of the Race to the Top program
- > \$87.5 million directly to school districts through grants based on reforms.

GRANT NEWS

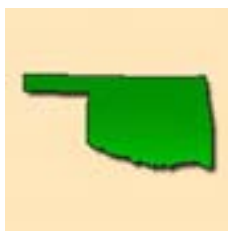
OKLAHOMA HIGHER EDUCATION

APRIL-MAY-JUNE-JULY 2010

Index Ranks Oklahoma as Entrepreneurial Hub

According to the **Kauffman Index of Entrepreneurial**

Activity, a leading indicator of new-business creation in the United States, the most active states for entrepreneurial activity



last year were **Oklahoma** and Montana. The study found that in 2009 in Oklahoma, **470 of 100,000** adults created a new business every month. To put this in perspective, consider a few other states. Massachusetts (330) and New York (340) were in the middle of the pack. And even California (410) and Texas (450) lagged behind Oklahoma. Multiply 470 times 12, and that's more than **5,600 per 100,000** people new businesses in a year, during the worst recession our nation has experienced since the 1930s. Fortune Small Business and the Kauffman Foundation named Oklahoma City as the country's No. 1 best large city to launch a business. These are results of more than 10 years of building entrepreneurial momentum. The private and public sectors of Oklahoma have emphasized research and development through the Oklahoma Center for the Advancement of Science and Technology, the EDGE Endowment, transferring promising technologies out of our universities, creating a network of angel investors, building a Research Park, the formation of OKBio and the Oklahoma Seed Capital Fund, and other initiatives, to build an infrastructure and ecosystem to support entrepreneurs. Oklahoma has been developing an innovation economy for more than a decade and will continue.

Governor's Cup Contest for Business Innovation

The **Donald W. Reynolds Governor's Cup** began six years ago for collegiate business plan competition and has awarded **\$900,000** in cash and **\$250,000** of services. **\$30,000** in scholarships and **\$80,000** in fellowships have been earned by over **800 entrepreneurial students**. The Governor's Cup has launched more than 15 entrepreneurial Oklahoma companies. 2010 concepts include the use of human hair to strengthen concrete in areas such as Haiti that lack other strengthening materials; health care uses of therapeutics and devices; technology speeding up the process of braces realigning teeth; a water-softening product that prevents the release of salt into groundwater; and energy proposals for wind energy and of nanotechnology methods of bringing oil up from mature fields. The competition is funded by the Donald W. Reynolds Foundation and other local sources, and managed by i2E, the not-for-profit corporation that mentors many of the state's technology-based startup companies. Two new awards are being presented at this year's competition. The **OG&E Positive Energy Award \$5,000** is for a business plan for the best use of energy generation or storage and delivery. The faculty adviser also will be awarded **\$2,000**. The **Al Tuttle Business Incubation Award** provides a graduate-level team business incubation space and services free for a year. Oklahoma teams have brought home **\$90,000** from that event — half the prize money that has been awarded.

GRANT NEWS

OKLAHOMA HIGHER EDUCATION

APRIL-MAY-JUNE-JULY 2010

OCAST Gives Over \$4M in Grants

OCAST awarded more than \$4 million over



three years to **32 Oklahoma health research projects**. Grantees were chosen from among 148 applicants. OCAST aims to recruit and retain health researchers in Oklahoma, improve health care and strengthen the state's health care industry.

- A **New Scientist** award of **\$100,000 per year** - **Roberto Pezza**, OMRF for chromosome research on cancer biology.

-Scientists at OMRF

-Scientists at the Laureate Institute for Brain Research

-**Oklahoma State University** faculty

-**OSU Center for Health Sciences** faculty

-**University of Oklahoma** faculty

-**OU Health Sciences Center** faculty

-**University of Tulsa** faculty

Chair Lift

A new bill to reduce a backlog of almost **\$365 million** in the state's endowed chairs program for Oklahoma colleges and universities will endow **914 new professorships at 21 institutions**. The **University of Oklahoma-Tulsa** is set to get 50 new professorships. **Tulsa Community College** will get 25. **Oklahoma State University-Tulsa** will get 9. This new version of the plan stretches the bond issue to 20 years and lowers the annual state cost.

State Regents Recognize Partnerships



The **Oklahoma State Regents for Higher Education's Economic Development Grant for Partnership Recognition** highlights successful partnerships between higher education institutions and businesses to cultivate a higher learning environment for employee scholarships, student internships, and faculty externships in the partner businesses. The 22 partnerships recognized for 2010 include:

Cameron University and BancFirst

Connors State College and Arvest Bank

EOSC and Kiamichi Technology Centers

Langston University-Oklahoma City and Tinker Federal Credit Union

Murray State College and Scott Pet Foods

NEOAM and Integris Baptist Regional Health Center and Foundation

NSU and WalMart

NOC and Stillwater Medical Center

NWOSU, Arysta LifeScience North America and Brine Electric

OCCC and Oklahoma Natural Gas

OPSU and Guymon Fire Department

OSU and Triton Scientific LLC

OSU-OKC and Total Environment Inc.

OSUIT and MidAmerica Industrial Park

Redlands and Oklahoma Tool & Machine

RSU and the City of Claremore

Rose and Tinker Air Force Base

Seminole State College and BancFirst

SE and the city of Durant

SWOSU and Dougherty Forestry Manufacturing

TCC and Dick Conner Correctional Center

WOSC and Altus Air Force Base.

GRANT NEWS

OKLAHOMA HIGHER EDUCATION

APRIL-MAY-JUNE-JULY 2010

State gets \$20 Million for Employment

Oklahoma will receive a fiscal year allotment of **\$20.39 million** under the Workforce Investment Act and Wagner-Peyser Act, from the U.S. Department of Labor. Allotments of nearly \$4 billion to states and rural areas will be used to help Americans get back to work through high-quality employment and training services, which are delivered largely through the department's national network of **One-Stop Career Centers**. These funds, and the employment and training services that they support, are a cornerstone of our nationwide effort to prepare America's workers for good jobs — the kind that spur the economy and pay family-supporting wages.

EDGE Fund Applicants

The **Economic Development Generating Excellence** Policy Board and president Paul Risser, has received 62 pre-proposals for the third year of funding. In 2009 65 pre-proposals were received and 5 awarded for \$7.5 million. This year **\$6 million** will be available. The 62 pre-proposals are world-class in focus and scope and have potential to create jobs and technology companies to improve Oklahoma's economy. 49 of the pre-proposals are new and 13 are resubmissions. The applications include four from private research facilities, 22 from universities and 35 from the business sector. Awards will be announced in the fall.



Federal Funds for i2E to Startup Companies



TURNING INNOVATION INTO ENTERPRISE

A **\$1 million** federal grant from the **US Economic Development Administration** to **i2E**, the nonprofit that helps Oklahoma startup companies, and **Tom Walker, President and CEO**, will allow the corporation to launch an executive-in-residence program while expanding other resources for fledgling businesses. The grant will be matched with **another \$1 million** collectively from the **Greater Oklahoma City Chamber**, the **City of Oklahoma City**, the **Oklahoma Medical Research Foundation**, the **Oklahoma Business Roundtable** and **Presbyterian Health Foundation**.